



Guide Price
£450,000

Freehold

3x  1x  2x 

**Tonbridge Road, Teston,
Maidstone, Kent, ME18**

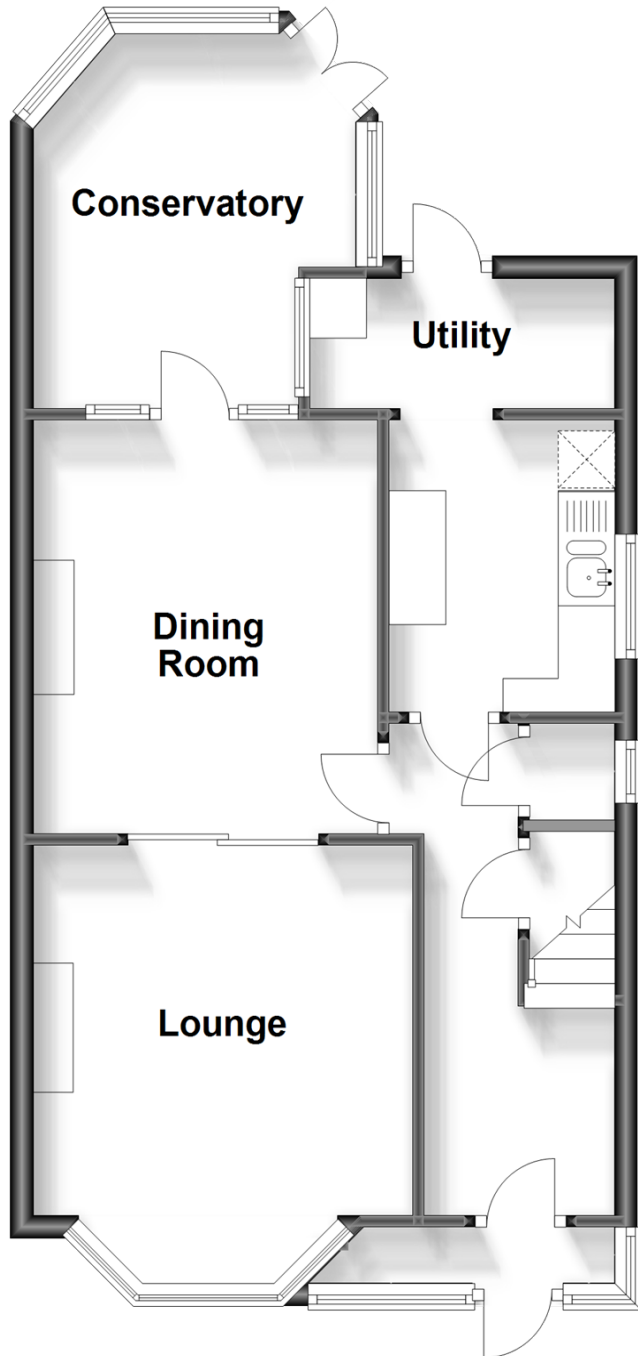
OVER 60?

Secure this property
for up to **59% less!**

Wards
Helping you move forwards

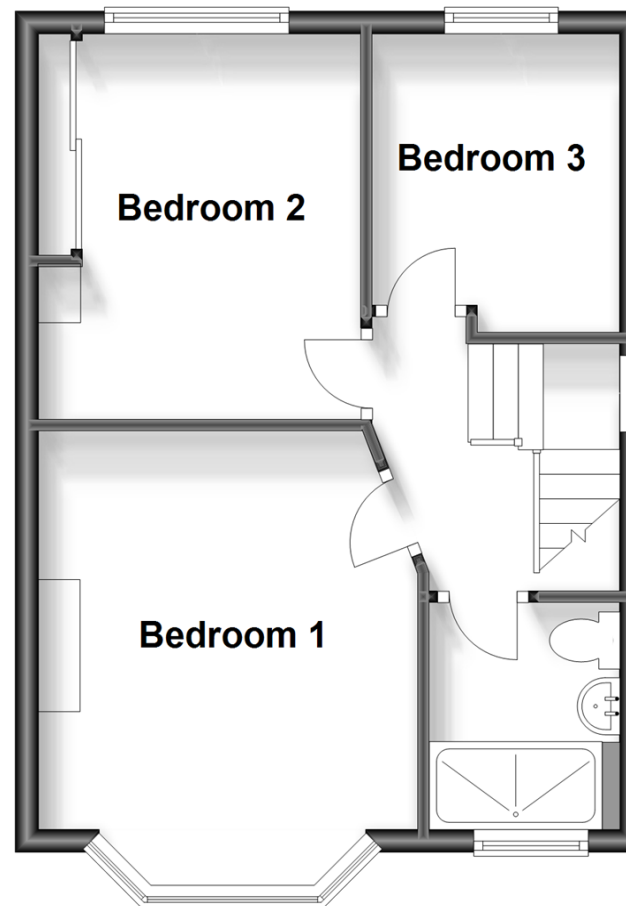
Ground Floor

Approx. 49.4 sq. metres (532.0 sq. feet)



First Floor

Approx. 36.2 sq. metres (390.0 sq. feet)



Accommodation

GROUND FLOOR

Entrance Porch

Entrance Hall

Lounge: 12'10 x 10'11 (3.91m x 3.33m)

Dining Room: 11'11 x 9'11 (3.63m x 3.02m)

Kitchen: 8'5 x 6'5 (2.57m x 1.96m)

Utility: 8'11 x 3'9 (2.72m x 1.14m)

Conservatory: 11'2 x 9'11 (3.41m x 3.02m)

FIRST FLOOR

Landing

Bedroom 1: 13'10 x 10'11 (4.22m x 3.33m)

Bedroom 2: 10'11 x 9'1 (3.33m x 2.77m)

Bedroom 3: 9'0 x 7'3 (2.75m x 2.21m)

Shower Room

OUTSIDE

Front Garden

Enormous Rear Garden

Garage & Driveway



Main features

- Semi-detached house enjoying a substantial plot of 0.939 acres
- Enormous scope & potential
- Garage & generous driveway
- Highly desirable location with views overlooking the valley
- Chain free and keys held



Nearest Schools

Primary Schools: Watringbury C of E Primary 0.5 miles, The Discovery School 1.3 miles, Kings Hill School 1.8 miles
Secondary Schools: The Malling School 2.5 miles, Bower Grove School 2.6 miles, Oakwood Park Grammar School 3.0 miles



Transport Information

Train Stations: Watringbury 0.3 miles, Yalding 2.0 miles, East Malling 2.2 miles



Address

Tonbridge Road, Teston, Maidstone, Kent, ME18



Directions

For directions to this property please contact us.



Call Kings Hill Branch 01732 222211 ■ wardsofkent.co.uk



- Legal advice should be taken to verify fixtures/fittings, planning, alterations and/or lease details
- Appliances & services are untested, dimensions are approximate and floor plans are not to scale
- Through a Homewise Home For Life Plan people aged 60+ can secure this property for up to 59% less, by purchasing a Lifetime Lease.



12404908/20231023/SG/NR