



Guide Price
£450,000

Freehold

3x  1x  1x 

**Green Lane, Trottiscliffe,
Kent, ME19**

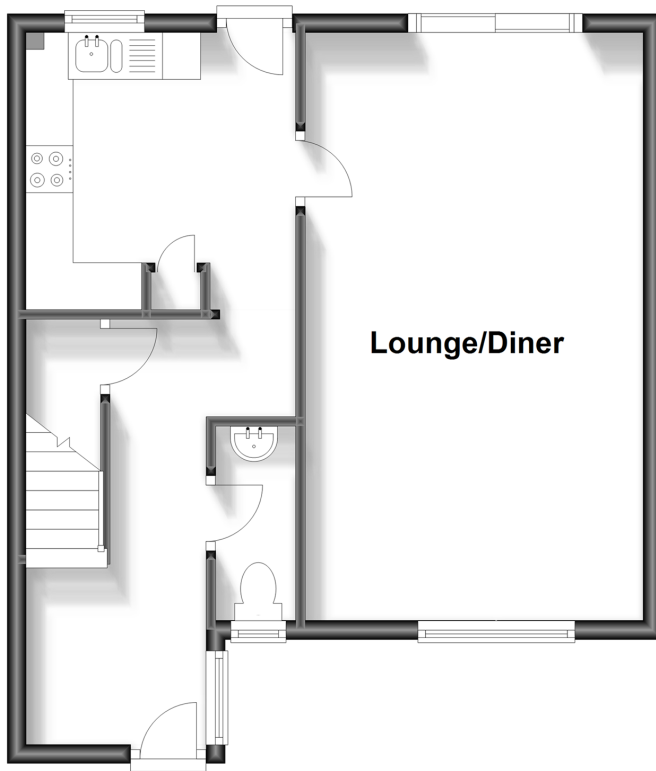
OVER 60?

Secure this property
for up to **59% less!**

Wards
Helping you move forwards

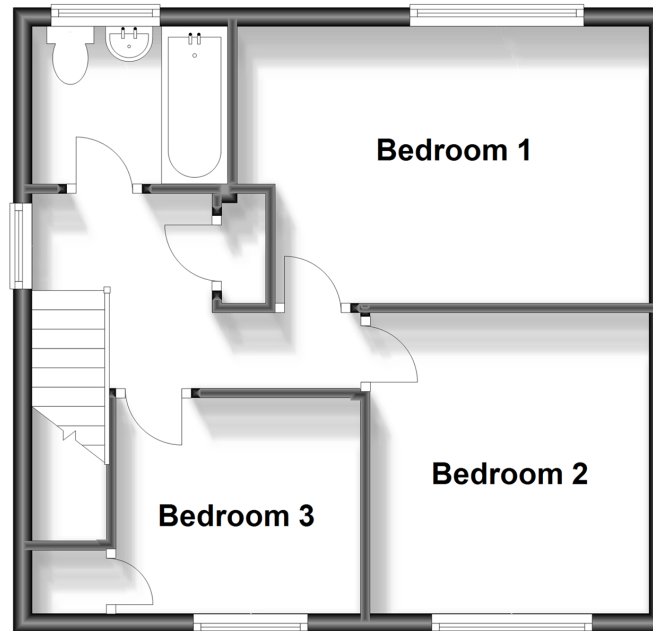
Ground Floor

Approx. 43.5 sq. metres (468.5 sq. feet)



First Floor

Approx. 41.3 sq. metres (444.1 sq. feet)



Accommodation

GROUND FLOOR

Entrance Hall

Cloakroom

Lounge/Diner: 20'6 x 11'8 (6.25m x 3.56m)

Kitchen: 9'8 x 9'4 (2.95m x 2.85m)

FIRST FLOOR

Landing

Bedroom 1: 14'6 x 9'7 (4.42m x 2.92m)

Bedroom 2: 11'4 x 9'10 (3.46m x 3.00m)

Bedroom 3: 8'4 x 7'6 (2.54m x 2.29m)

Bathroom

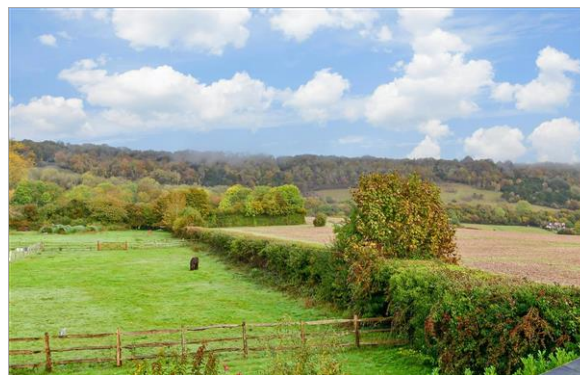
OUTSIDE

Front & Rear Gardens

Double Driveway

Detached Garage

Spectacular Views



Main features

- Spectacular countryside views
- Private cul-de-sac setting within a highly desired village
- Close to Montessori nursery, church, public houses & superb restaurant
- Potential to extend (subject to planning permission)
- Rarely available & Priced to sell



Nearest Schools

Primary Schools: Trottiscliffe C of E Primary 0.1 miles, Vigo Village School 0.8 miles, Culverstone Green Primary 1.5 miles
Secondary Schools: Wrotham School 2.2 miles, Grange Park School 2.7 miles, Meopham School 3.4 miles



Transport Information

Train Stations: Borough Green & Wrotham 2.7 miles, West Malling 3.3 miles, Snodland 4.2 miles



Address

Green Lane, Trottiscliffe, Kent, ME19



Directions

For directions to this property please contact us.



Wards
Helping you move forwards

Call Kings Hill Branch 01732 222211 ■ wardsofkent.co.uk



■ Legal advice should be taken to verify fixtures/fittings, planning, alterations and/or lease details ■ Appliances & services are untested, dimensions are approximate and floor plans are not to scale
■ Through a Homewise Home For Life Plan people aged 60+ can secure this property for up to 59% less, by purchasing a Lifetime Lease.



12404909/20240110/CH/NR