



Guide Price
£450,000

Freehold

3x  2x  1x 

**Cabusse Close, Kings
Hill, West Malling, Kent,
ME19**

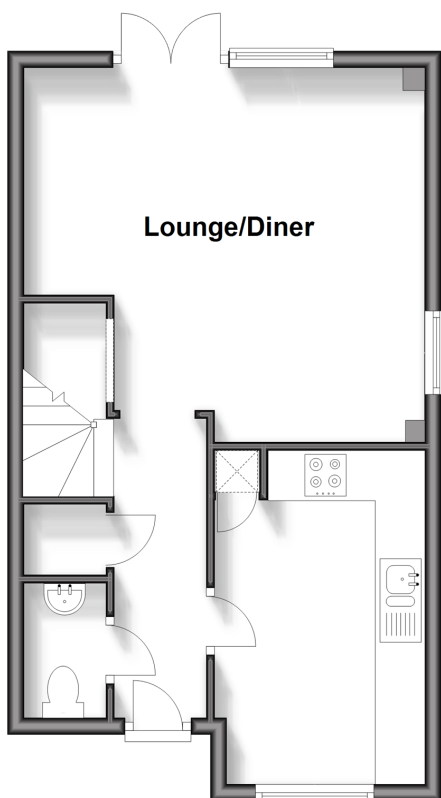
OVER 60?

Secure this property
for up to **59% less!**

Wards
Helping you move forwards

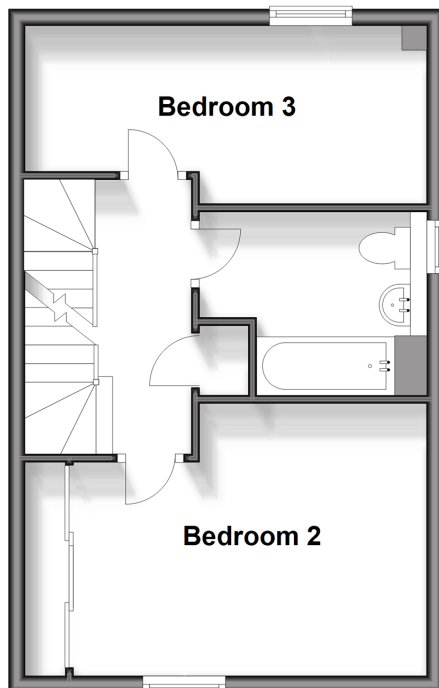
Ground Floor

Approx. 39.7 sq. metres (427.5 sq. feet)



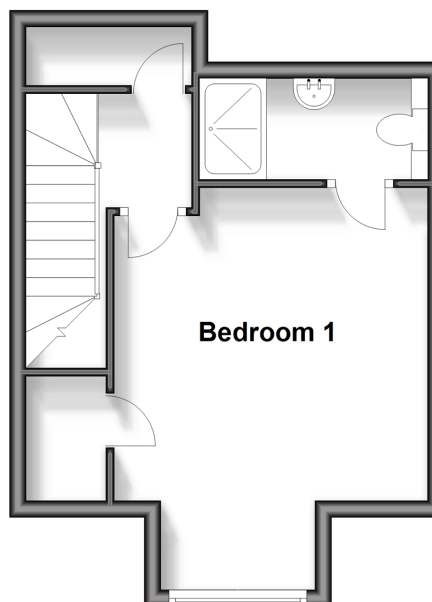
First Floor

Approx. 37.8 sq. metres (407.0 sq. feet)



Second Floor

Approx. 27.8 sq. metres (299.1 sq. feet)



Accommodation

GROUND FLOOR

Entrance Hall

Cloakroom

Kitchen: 12'0 x 9'0 (3.66m x 2.75m)

Lounge/Diner: 17'1 x 10'6 (5.21m x 3.20m)

FIRST FLOOR

Landing

Bedroom 2: 14'0 x 10'0 (4.27m x 3.05m)

Bathroom

Bedroom 3: 14'0 x 10'0 (4.27m x 3.05m)

SECOND FLOOR

Landing

Bedroom 1: 14'0 x 11'0 (4.27m x 3.36m)

En-Suite Shower Room

OUTSIDE

Front & Rear Gardens

Double Driveway



Main features

- Impressive modern town house built by Bellway to their 'Duchess' design
- A highly efficient home with low running costs
- Impressive landscaped rear garden
- Recently decorated & upgrades found throughout
- Large private driveway adjoining the home



Nearest Schools

Primary Schools: Valley Invicta Primary 0.2 miles, Kings Hill School 0.3 miles, The Discovery School 0.6 miles

Secondary Schools: The Malling School 1.7 miles, Grange Park School 1.9 miles, Aylesford School - Sports College



Transport Information

Train Stations: West Malling 1.2 miles, Watlington 1.6 miles, East Malling 1.6 miles



Address

Cabusse Close, Kings Hill, West Malling, Kent, ME19



Directions

For directions to this property please contact us.



Call Kings Hill Branch 01732 222211 ■ wardsofkent.co.uk



- Legal advice should be taken to verify fixtures/fittings, planning, alterations and/or lease details
- Appliances & services are untested, dimensions are approximate and floor plans are not to scale
- Through a Homewise Home For Life Plan people aged 60+ can secure this property for up to 59% less, by purchasing a Lifetime Lease.



12404923/20240102/NR/NR