



Price
£395,000

Freehold

3x  2x  1x 

**Hazen Road, Kings Hill,
West Malling, Kent,
ME19**

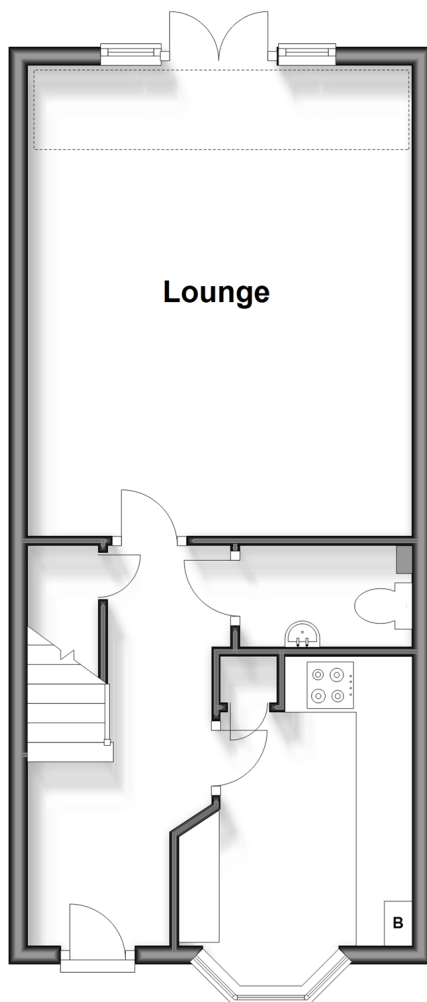
OVER 60?

Secure this property
for up to **59% less!**

Wards
Helping you move forwards

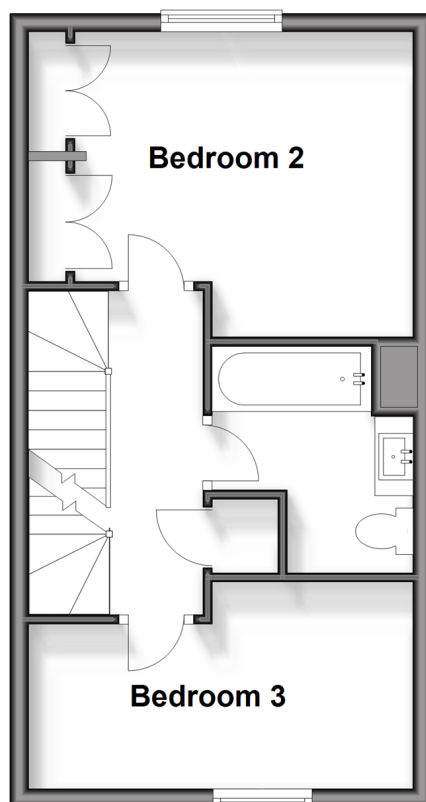
Ground Floor

Approx. 423.8 sq. feet



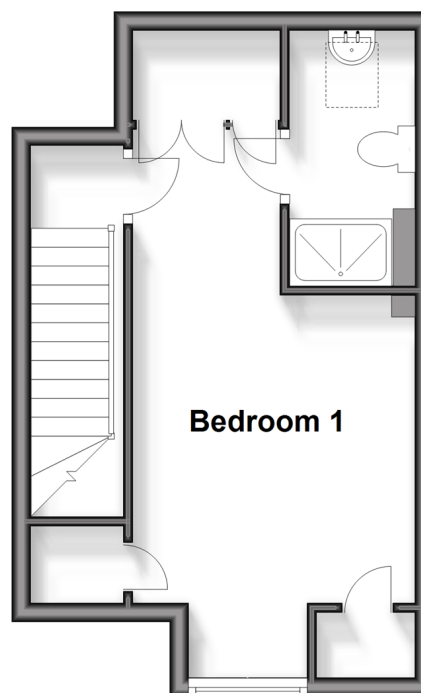
First Floor

Approx. 362.4 sq. feet



Second Floor

Approx. 280.8 sq. feet



Accommodation

GROUND FLOOR

Entrance Hall

Cloakroom

Lounge: 16'8 x 13'7 (5.08m x 4.14m)

Kitchen: 12'0 x 9'0 (3.66m x 2.75m)

FIRST FLOOR

Landing

Bedroom 2: 13'7 x 10'9 (4.14m x 3.28m)

Bedroom 3: 13'7 x 7'7 (4.14m x 2.31m)

Bathroom

SECOND FLOOR

Landing

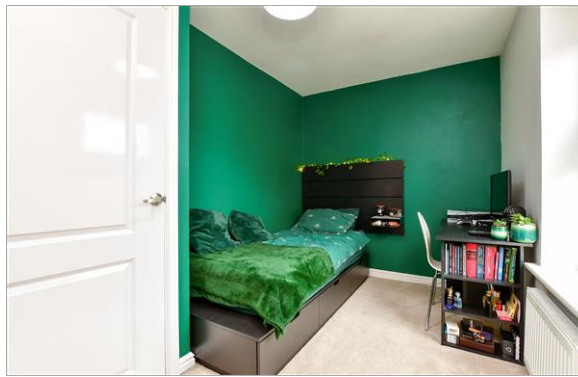
Bedroom 1: 17'1 x 10'1 (5.21m x 3.08m)

En-Suite Shower Room

OUTSIDE

Front & Rear Gardens

Garage & Driveway



Main features

- Modern town house centrally located for Kings Hill's vast amenities
- Generous proportions & improvements throughout
- Quiet cul-de-sac setting away from passing traffic
- Easily accessible driveway & garage
- Low maintenance rear garden



Nearest Schools

Primary Schools: Valley Invicta Primary 0.3 miles, Kings Hill School 0.6 miles, The Discovery School 0.8 miles
Secondary Schools: Grange Park School 3.8 miles, The Malling School 4.0 miles, Wrotham School 4.5 miles



Transport Information

Train Stations: West Malling 3.0 miles, Yalding 3.2 miles, East Farleigh 3.4 miles



Address

Hazen Road, Kings Hill, West Malling, Kent, ME19



Directions

For directions to this property please contact us.



Wards
Helping you move forwards

Call Kings Hill Branch 01732 222211 ■ wardsofkent.co.uk



■ Legal advice should be taken to verify fixtures/fittings, planning, alterations and/or lease details ■ Appliances & services are untested, dimensions are approximate and floor plans are not to scale
■ Through a Homewise Home For Life Plan people aged 60+ can secure this property for up to 59% less, by purchasing a Lifetime Lease.



12404931/20240226/SG/NR