



Price
£425,000

Freehold

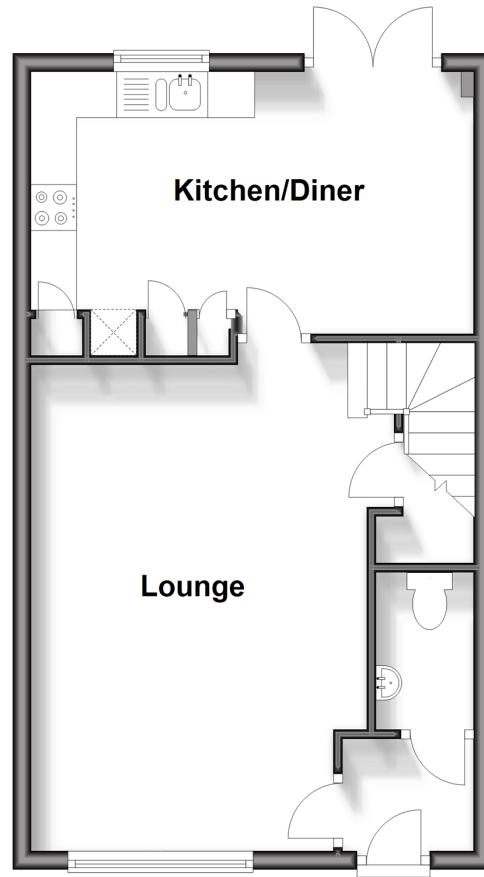
3x  2x  1x 

**Linnitt Lane, Ryarsh,
West Malling, Kent,
ME19**

Wards
Helping you move forwards

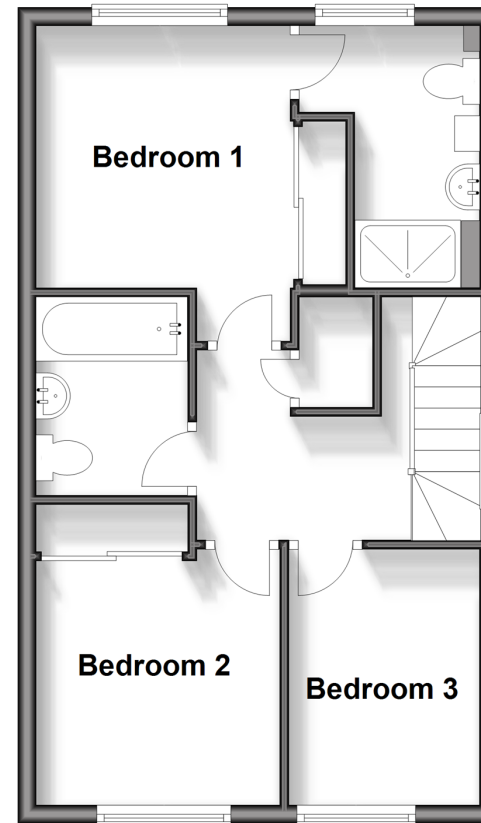
Ground Floor

Approx. 41.2 sq. metres (443.5 sq. feet)



First Floor

Approx. 41.5 sq. metres (446.3 sq. feet)



Accommodation

GROUND FLOOR

Hallway
Lounge: 18'2 x 12'2 (5.54m x 3.71m)
Kitchen/Diner: 16'1 x 10'11 (4.91m x 3.33m)
Cloakroom

FIRST FLOOR

Landing
Bedroom 1: 11'3 x 11'2 (3.43m x 3.41m)
En-Suite Shower Room
Bedroom 2: 10'9 x 8'11 (3.28m x 2.72m)
Bedroom 3: 9'11 x 6'11 (3.02m x 2.11m)
Bathroom

OUTSIDE

Off-Road Parking
Rear Garden



Main features

- Modern end of terraced house still under NHBC warranty
- High specification & a super standard of decoration
- Popular & highly sought after village location
- Close proximity to West Malling High Street & station
- Low maintenance landscaped rear garden



Nearest Schools

Primary Schools: Platts Heath Primary 14. miles, Lenham Primary 14. miles, Egerton C of E Primary 16. miles

Secondary Schools: Swadelands School 14. miles, Heath Farm School 17. miles, Homewood School and Sixth Form



Transport Information

Train Stations: Charing 18. miles, Pluckley 18. miles, Ashford International 23. miles



Address

Linnitt Lane, Ryarsh, West Malling, Kent, ME19



Directions

For directions to this property please contact us.



Wards
Helping you move forwards

Call Kings Hill Branch 01732 222211 ■ wardsofkent.co.uk



■ Legal advice should be taken to verify fixtures/fittings, planning, alterations and/or lease details ■ Appliances & services are untested, dimensions are approximate and floor plans are not to scale



12404943/20240118/SG/NR