



Price
£464,995

Freehold

3x  2x  2x 

**Park Drive, Kings Hill,
West Malling, Kent,
ME19**

Wards
Helping you move forwards



Main features

- Bellway built modern semi-detached family house
- Remainder of the 10 year NHBC warranty for peace of mind
- As new accommodation found throughout
- Pleasant rear garden
- Off road parking & en-bloc car barn

Accommodation

GROUND FLOOR

Entrance Hall

Cloakroom

Lounge: 17'8 x 10'6 (5.39m x 3.20m)

Kitchen/Diner: 17'10 x 11'0 (5.44m x 3.36m)

FIRST FLOOR

Landing

Bedroom 1: 11'1 x 9'10 (3.38m x 3.00m)

En-Suite Shower Room

Bedroom 2: 11'5 x 7'7 (3.48m x 2.31m)

Bedroom 3: 10'0 x 7'11 (3.05m x 2.41m)

Bathroom

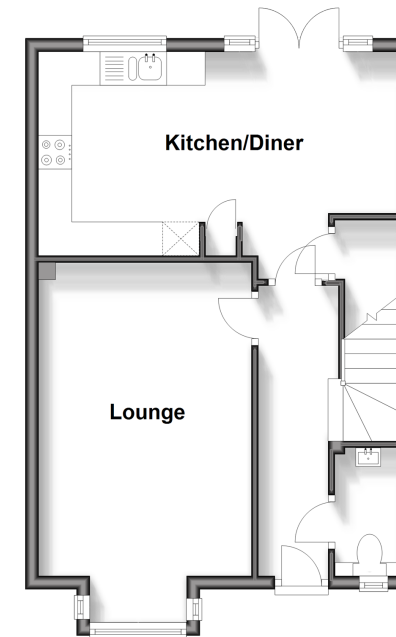
OUTSIDE

Front & Rear Gardens

Car Barn

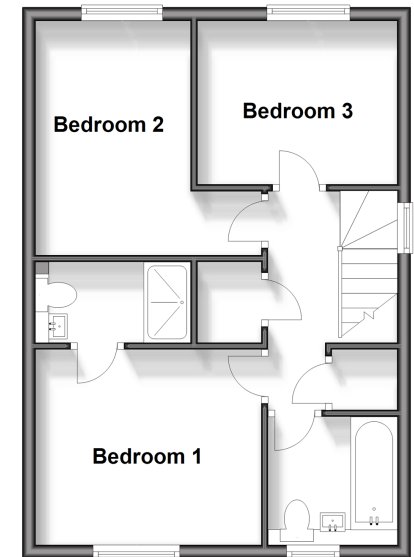
Ground Floor

Approx. 43.3 sq. metres (465.8 sq. feet)



First Floor

Approx. 42.9 sq. metres (461.6 sq. feet)



Call Kings Hill - 01732 222211 ■ wardsof Kent.co.uk

- Legal advice should be taken to verify fixtures/fittings, planning, alterations and/or lease details
- Appliances & services are untested, dimensions are approximate and floor plans are not to scale



12404953/20240201/SG/NR