



Guide Price
£650,000
Freehold

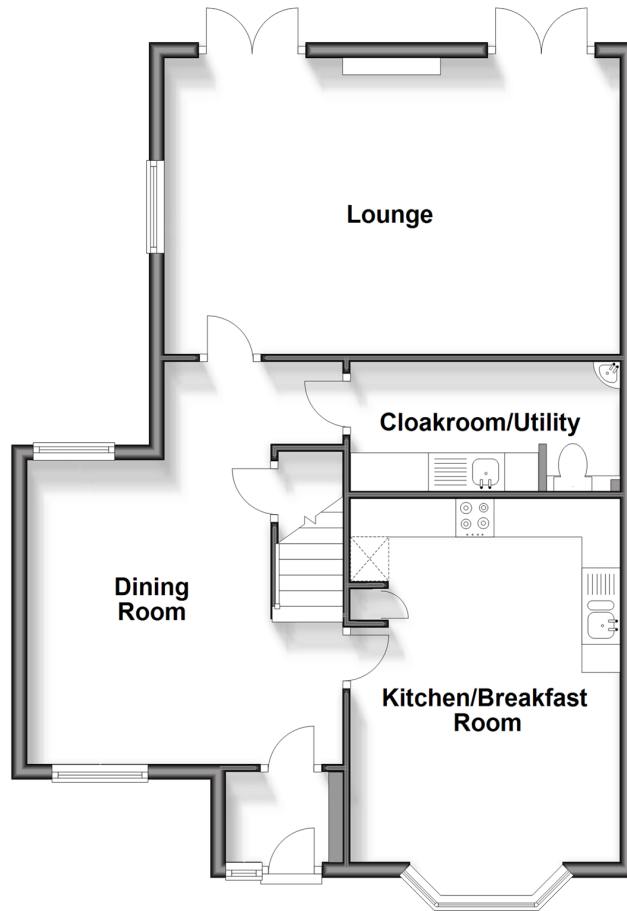
4x  2x  1x 

Sadow Place, Kings Hill, West Malling,
Kent, ME19

Wards
Helping you move forwards

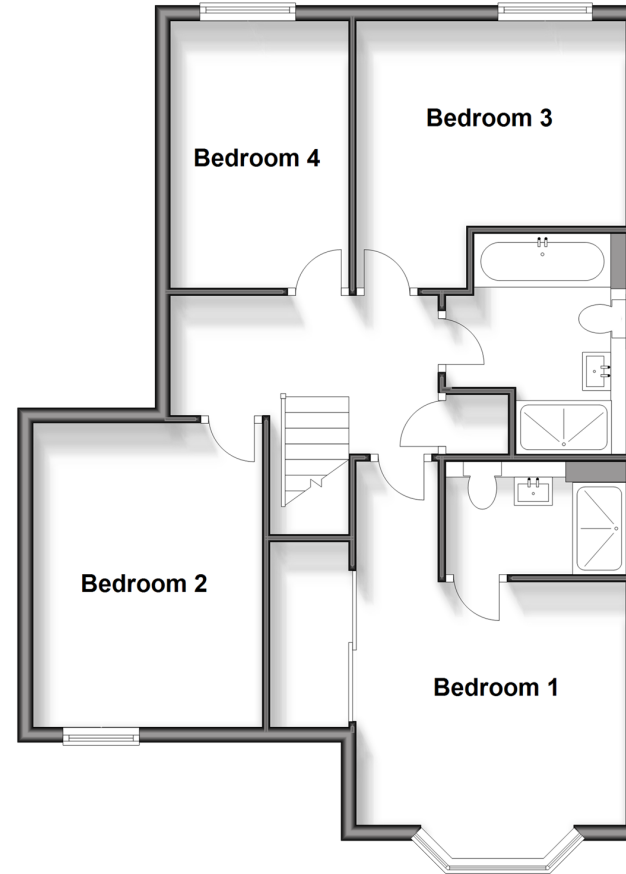
Ground Floor

Approx. 69.0 sq. metres (743.0 sq. feet)



First Floor

Approx. 67.3 sq. metres (724.4 sq. feet)



Accommodation

GROUND FLOOR

Entrance Hall

Cloakroom/Utility

Kitchen/Breakfast Room: 15'6 x 11'5 (4.73m x 3.48m)

Dining Room: 13'1 x 10'6 (3.99m x 3.20m)

Lounge: 19'7 x 12'7 (5.97m x 3.84m)

Landing

Bedroom 1: 11'5 x 10'6 (3.48m x 3.20m)

En-Suite Shower Room

Bedroom 2: 13'1 x 10'5 (3.99m x 3.18m)

Bedroom 3: 11'5 x 8'8 (3.48m x 2.64m)

Bedroom 4: 11'0 x 7'8 (3.36m x 2.34m)

Bathroom

Front & Rear Gardens

Car Port & Driveway

FIRST FLOOR

OUTSIDE



Main features

- Impressive & rarely available modern detached family house
- A most pleasing family orientated layout
- Generous sunny aspect rear garden with electric awning
- Car port & two car driveway
- Close to Discovery school, sports park & woodland walks



Nearest Schools

Primary Schools: The Discovery School 0.2 miles, Kings Hill School 0.8 miles, Valley Invicta Primary 0.8 miles
Secondary Schools: The Malling School 1.2 miles, Grange Park School 1.9 miles, Aylesford School - Sports College 2.6 miles



Transport Information

Train Stations: West Malling 1.1 miles, East Malling 1.1 miles, Watlington 1.4 miles



Address

Sandow Place, Kings Hill, West Malling, Kent, ME19



Directions

For directions to this property please contact us.



Wards
Helping you move forwards

Call Kings Hill Branch 01732 222211 ■ wardsofkent.co.uk



■ Legal advice should be taken to verify fixtures/fittings, planning, alterations and/or lease details ■ Appliances & services are untested, dimensions are approximate and floor plans are not to scale



12404971/20240508/NR/NR