



Price

£800,000

Freehold

5x  2x  2x 

**Primrose Cottage,
Riverside, Eynsford,
Kent, DA4**

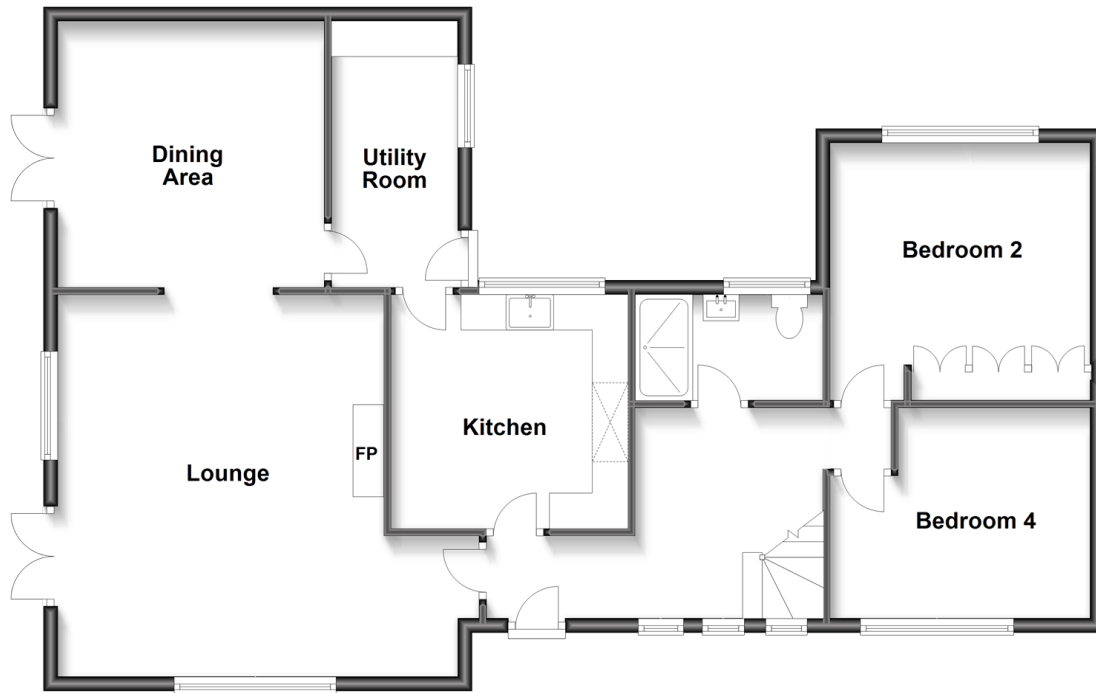
OVER 60?

Secure this property
for up to **59% less!**

Wards
Helping you move forwards

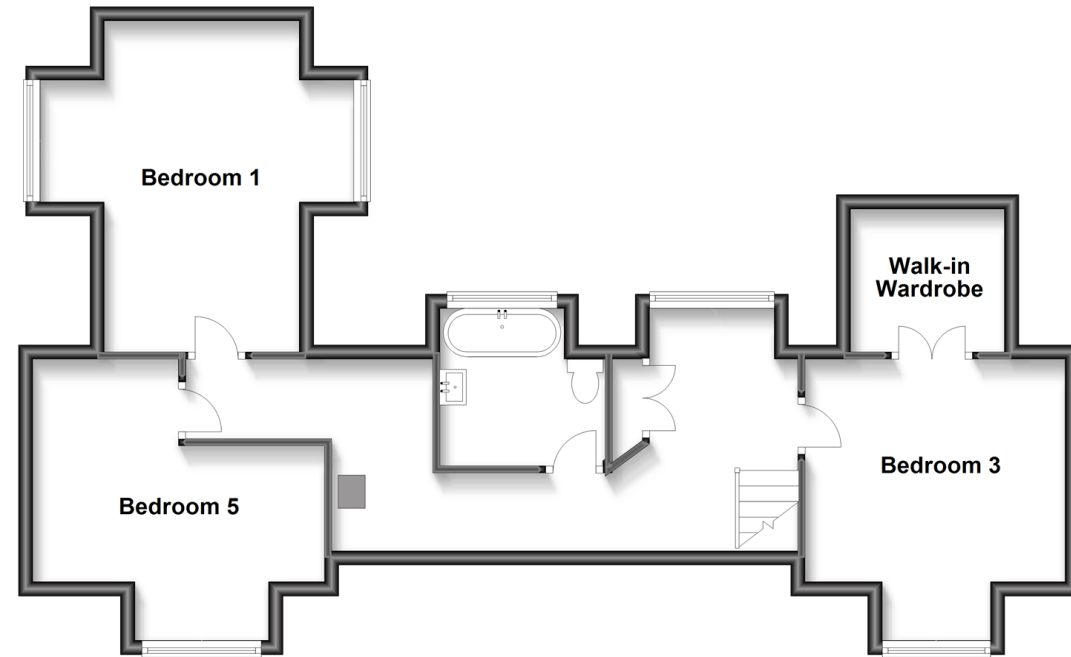
Ground Floor

Approx. 98.5 sq. metres (1060.7 sq. feet)



First Floor

Approx. 68.9 sq. metres (741.1 sq. feet)



Accommodation

GROUND FLOOR

Entrance Hall

Lounge: 18'2 x 17'7 (5.54m x 5.36m)

Dining Area: 12'2 x 12'1 (3.71m x 3.69m)

Utility Room: 12'2 x 5'2 (3.71m x 1.58m)

Kitchen: 10'8 x 10'6 (3.25m x 3.20m)

Bedroom 2: 11'9 x 11'9 (3.58m x 3.58m)

Bedroom 4: 11'9 x 9'7 (3.58m x 2.92m)

Shower Room: 7'9 x 4'9 (2.36m x 1.45m)

FIRST FLOOR

Landing

Bedroom 1: 15'2 x 8'7 (4.63m x 2.62m)

Bedroom 3: 11'9 x 10'2 walk-in wardrobe
(3.58m x 3.10m)

Walk-in Wardrobe

Bedroom 5: 11'8 maximum (3.56m) x 10'0
(3.05m) narrowing to 8'6 (2.59m)

Bathroom: 7'6 x 7'1 (2.29m x 2.16m)

OUTSIDE

Driveway

Front Garden

Rear Garden



Main features

- Unique and charming detached house with original features
- 5 versatile bedrooms
- Idyllic village location with countryside walks
- Short walk to Eynsford station and Anthony Roper School
- Gated private parking (for 1 car) and additional parking on private road



Nearest Schools

Primary Schools: The Anthony Roper Primary 0.3 miles, Shoreham Village School 2.7 miles, Crockenhill Primary 2.8 miles

Secondary Schools: Parkwood Hall School 2.5 miles,

Transport Information

Train Stations: Eynsford 0.6 miles, Shoreham 2.9 miles, Farningham Road 3.0 miles

Address

Primrose Cottage, Riverside, Eynsford, Kent, DA4

Directions

For directions to this property please contact us.





Wards
Helping you move forwards

Call Eynsford Branch 01322 862844 ■ wardsofkent.co.uk



■ Legal advice should be taken to verify fixtures/fittings, planning, alterations and/or lease details ■ Appliances & services are untested, dimensions are approximate and floor plans are not to scale
■ Through a Homewise Home For Life Plan people aged 60+ can secure this property for up to 59% less, by purchasing a Lifetime Lease.



12515452/20240205/MC/PP