



OVER 60?

Secure this property
for up to **59% less!**

Price

£425,000

Freehold

2x  1x  1x 

**Old Mill Close, Eynsford,
Kent, DA4**

Wards
Helping you move forwards



Main features

- Fabulous freehold attached bungalow
- Front and Rear gardens
- No onward chain
- Short walk to Eynsford train station and short drive to motorway network
- Sought after modern development with some stunning views and walks nearby

Accommodation

GROUND FLOOR

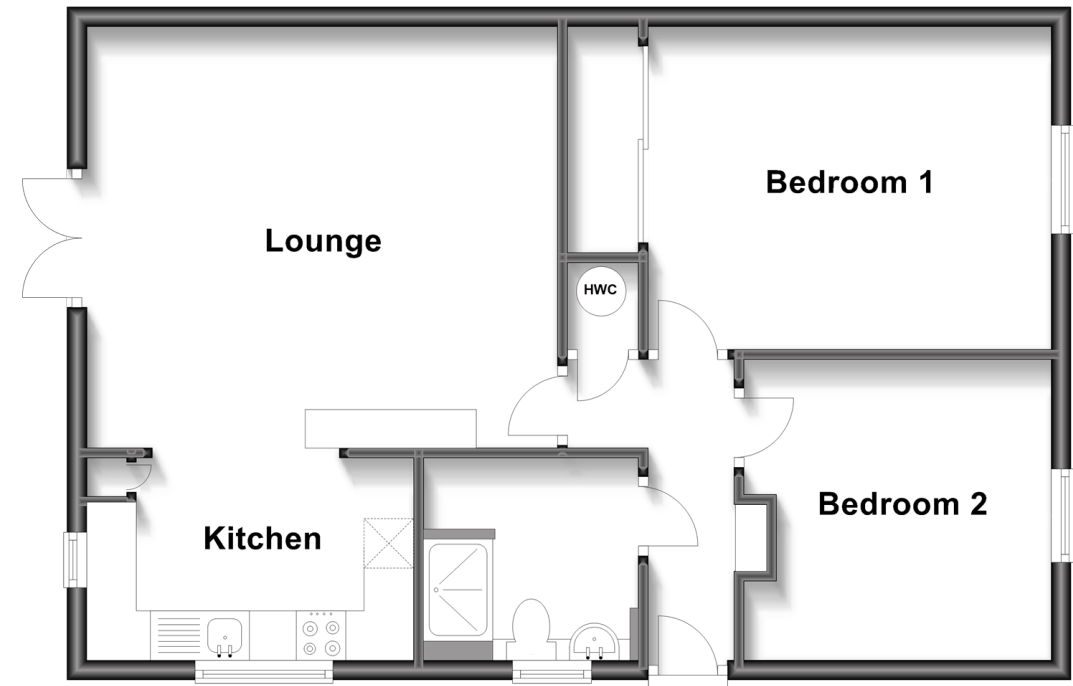
Entrance Hall
 Lounge : 15'6 x 14'1 (4.73m x 4.30m)
 Kitchen: 10'1 x 6'9 (3.08m x 2.06m)
 Bedroom 1: 12'6 x 10'5 (3.81m x 3.18m)
 Bedroom 2: 10'6 x 9'3 (3.20m x 2.82m)
 Shower Room

OUTSIDE

Front Garden
 Rear Garden
 2 Parking spaces

Ground Floor

Approx. 62.4 sq. metres (671.5 sq. feet)



Call Eynsford - 01322 862844 ■ wardsofkent.co.uk

■ Legal advice should be taken to verify fixtures/fittings, planning, alterations and/or lease details
 ■ Through a Homewise Home For Life Plan people aged 60+ can secure this property for up to 59% less, by purchasing a Lifetime Lease.

■ Appliances & services are untested, dimensions are approximate and floor plans are not to scale



12516257/20230627/SJ/PP