



Price
£950,000

Freehold

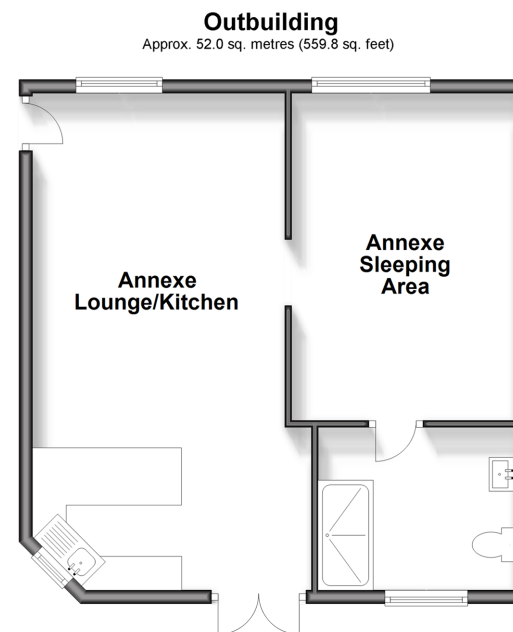
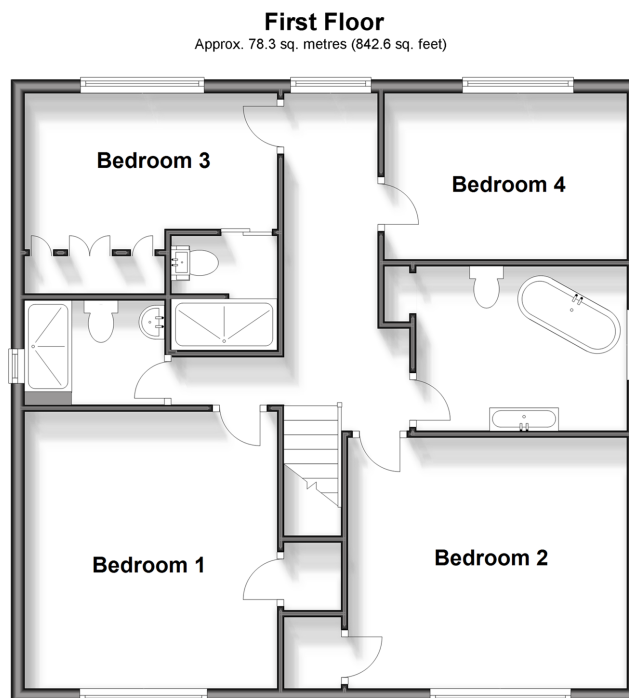
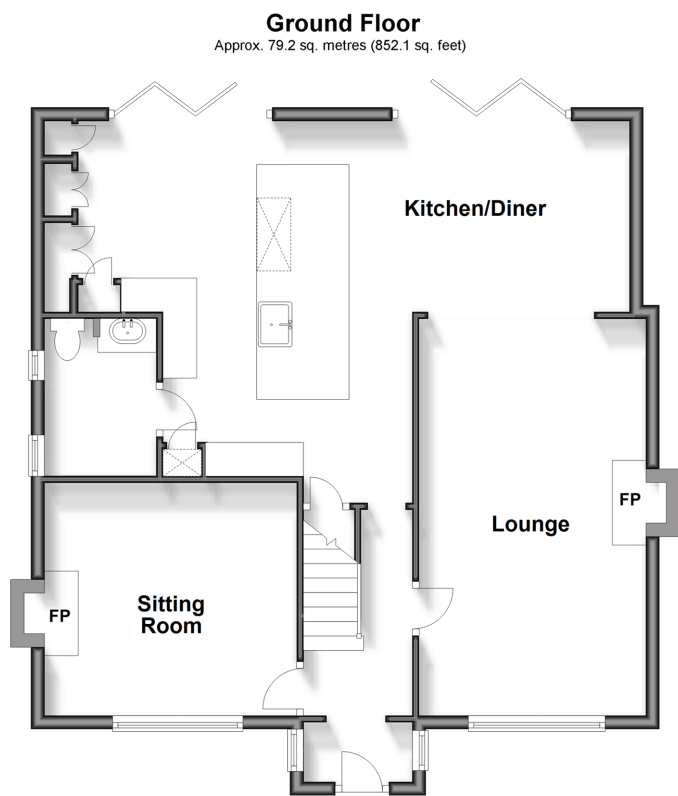
4x  4x  2x 

**Dartford Road, Horton
Kirby, Dartford, Kent,
DA4**

OVER 60?

Secure this property
for up to **59% less!**

Wards
Helping you move forwards



Accommodation

GROUND FLOOR

Entrance Porch
Hallway
Lounge : 20'4 x 10'10 (6.20m x 3.30m)
Sitting Room: 12'4 x 12'2 (3.76m x 3.71m)
Kitchen/Diner: (L-shaped) 23'0 x 9'4 (7.02m x 2.85m)
plus 8'9 x 9'4 (2.67m x 2.85m)
Cloakroom: 6'6 x 5'4 (1.98m x 1.63m)

FIRST FLOOR

Landing
Bedroom 1: 14'3 x 12'4 (4.35m x 3.76m)
Shower Room: 7'3 x 5'2 (2.21m x 1.58m)
Bedroom 2: 13'9 x 11'6 (4.19m x 3.51m)
Bedroom 3: 12'1 x 7'7 (3.69m x 2.31m)
En Suite Shower Room: 5'5 x 5'5 (1.65m x 1.65m)
Bedroom 4: 11'5 x 9'5 (3.48m x 2.87m)
Bathroom: 10'5 x 8'2 (3.18m x 2.49m)

OUTBUILDING

Annexe Lounge/Kitchen: 24'1 x 13'0 (7.35m x 3.97m)
Annexe Sleeping Area: 15'5 x 10'8 (4.70m x 3.25m)
En Suite Shower Room: 7'4 x 7'2 (2.24m x 2.19m)

OUTSIDE

Private Garden
Gated Off-Road Parking to Rear
Outbuilding



Main features

- Finished to an immaculate standard
- Large private garden with amazing countryside views
- Private gated off-road parking to the rear of property
- 1 bedroom detached annexe
- Large open plan kitchen/diner



Nearest Schools

Primary Schools: Horton Kirby C of E Primary 1.6 miles, Sutton-at-Hone CofE Primary 1.6 miles, The Anthony Roper Primary 2.0 miles

Secondary Schools: Parkwood Hall School 2.7 miles,



Transport Information

Train Stations: Farningham Road 0.9 miles, Eynsford 2.6 miles, Swanley 3.8 miles



Address

Dartford Road, Horton Kirby, Dartford, Kent, DA4



Directions

For directions to this property please contact us.



Wards
Helping you move forwards

Call Eynsford Branch 01322 862844 ■ wardsofkent.co.uk



■ Legal advice should be taken to verify fixtures/fittings, planning, alterations and/or lease details ■ Appliances & services are untested, dimensions are approximate and floor plans are not to scale
■ Through a Homewise Home For Life Plan people aged 60+ can secure this property for up to 59% less, by purchasing a Lifetime Lease.



12519039/20240315/MC/LP