



**OVER 60?**

Secure this property  
for up to **59% less!**

**Price**

**£650,000**

**Freehold**

2x  2x  2x 

**Mount View, St. Martin's  
Drive, Eynsford,  
Dartford, Kent, DA4**

*Wards*  
Helping you move forwards





## Main features

- Spacious property with potential to improve internally
- Plenty of off road parking with garage
- Very short walk to Eynsford Station
- Large front and rear gardens with countryside views
- Quiet location with short drive to local amenities

## Accommodation

### GROUND FLOOR

#### Hallway

- Lounge: 12'0 x 11'11 (3.66m x 3.63m)  
 Dining Room: 13'11 x 12'0 (4.24m x 3.66m)  
 Kitchen: 11'5 x 8'11 (3.48m x 2.72m)  
 Bathroom: 8'6 x 5'6 (2.59m x 1.68m)  
 Study: 8'11 x 7'11 (2.72m x 2.41m)  
 Garden Room: 8'10 x 6'9 (2.69m x 2.06m)

### FIRST FLOOR

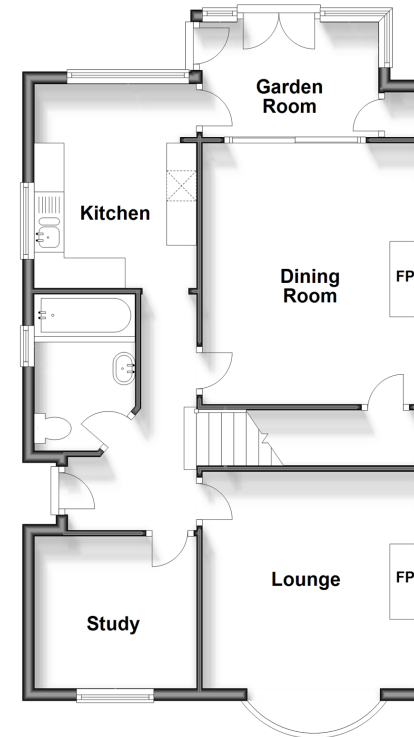
#### Landing

- Bedroom 1: 13'11 x 12'0 (4.24m x 3.66m)  
 Bedroom 2: 12'0 x 12'0 (3.66m x 3.66m)  
 Shower Room: 21'4 x 4'8 (6.51m x 1.42m)

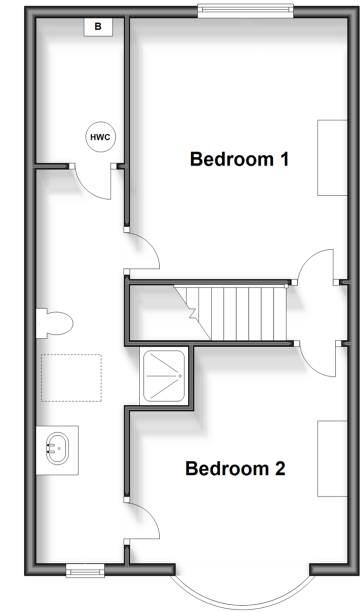
### OUTSIDE

- Front Garden  
 Rear Garden  
 Off Road Parking  
 Garage

**Ground Floor**  
 Approx. 67.4 sq. metres (725.4 sq. feet)



**First Floor**  
 Approx. 47.6 sq. metres (511.9 sq. feet)



**Call Eynsford - 01322 862844 ■ [wardsofkent.co.uk](http://wardsofkent.co.uk)**

- Legal advice should be taken to verify fixtures/fittings, planning, alterations and/or lease details
- Appliances & services are untested, dimensions are approximate and floor plans are not to scale
- Through a Homewise Home For Life Plan people aged 60+ can secure this property for up to 59% less, by purchasing a Lifetime Lease.



12519073/20240327/MC/LP