



**Price**  
**£400,000**

**Freehold**

2x  1x  1x 

**Gibsons Place, High  
Street, Eynsford, Kent,  
DA4**

**OVER 60?**

Secure this property  
for up to **59% less!**

*Wards*  
Helping you move forwards





## Main features

- Lovely modern terraced house
- Gated resident and visitor parking
- Close proximity to local amenities and activities
- Short walk to Eynsford train station
- Short drive to excellent high street shopping at Sevenoaks

## Accommodation

### GROUND FLOOR

Entrance Hall

Kitchen/Diner: 13'7 x 6'6 (4.14m x 1.98m)

Lounge: 13'6 x 10'4 (4.12m x 3.15m)

### FIRST FLOOR

Landing

Bedroom 1: 13'6 x 9'1 (4.12m x 2.77m)

Bedroom 2: 10'4 x 8'4 (3.15m x 2.54m)

Bathroom: 7'1 x 6'6 (2.16m x 1.98m)

### OUTSIDE

Rear Garden

Front Garden

1 Allotted Parking Space

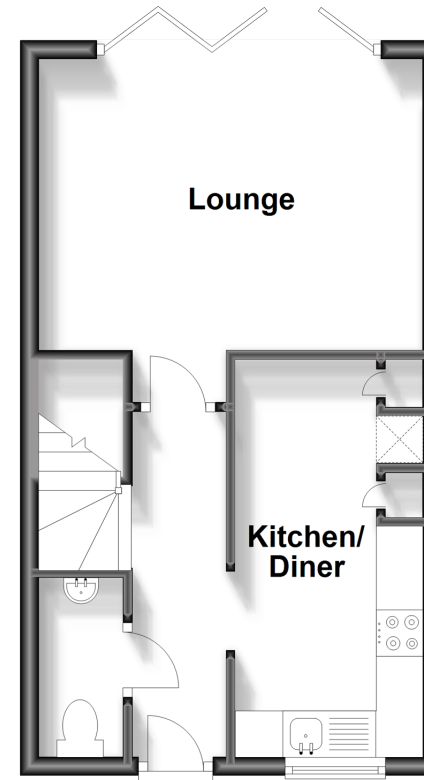
5 Visitor Parking Spaces

**Call Eynsford - 01322 862844 ■ [wardsofkent.co.uk](http://wardsofkent.co.uk)**

- Legal advice should be taken to verify fixtures/fittings, planning, alterations and/or lease details
- Appliances & services are untested, dimensions are approximate and floor plans are not to scale
- Through a Homewise Home For Life Plan people aged 60+ can secure this property for up to 59% less, by purchasing a Lifetime Lease.

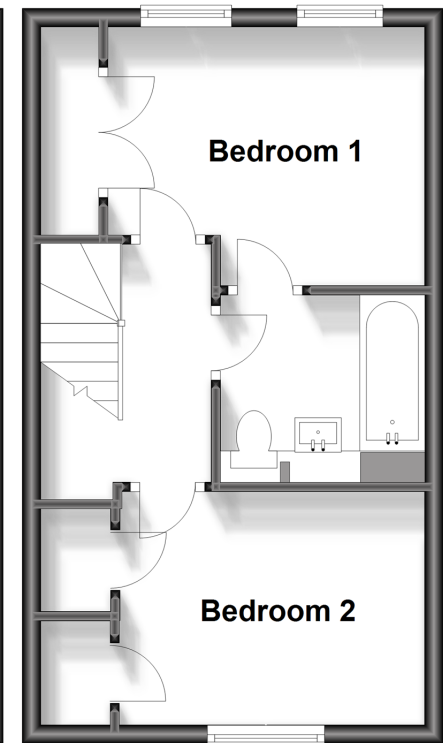
### Ground Floor

Approx. 31.1 sq. metres (334.9 sq. feet)



### First Floor

Approx. 31.1 sq. metres (334.9 sq. feet)



12519375/20231010/LP/PP