



Price

£400,000

Freehold

2x  1x  1x 

**Valley View Terrace,
Eynsford Road,
Farningham, Kent, DA4**

OVER 60?

Secure this property
for up to **59% less!**

Wards
Helping you move forwards



Main features

- Superb extended terraced house
- Off road parking for 2 cars at the rear
- Central village location
- Very well presented home throughout
- Short drive to motorway network and Eynsford train station

Accommodation

GROUND FLOOR

Entrance Hall

Lounge: 12'2 x 12'0 (3.71m x 3.66m)

Kitchen: 19'9 x 15'5 (6.02m x 4.70m)

Utility Area

Cloakroom

FIRST FLOOR

Landing

Bedroom 1: 14'8 x 11'2 (4.47m x 3.41m)

Bedroom 2: 9'8 x 9'5 (2.95m x 2.87m)

Bathroom: 7'5 x 6'9 (2.26m x 2.06m)

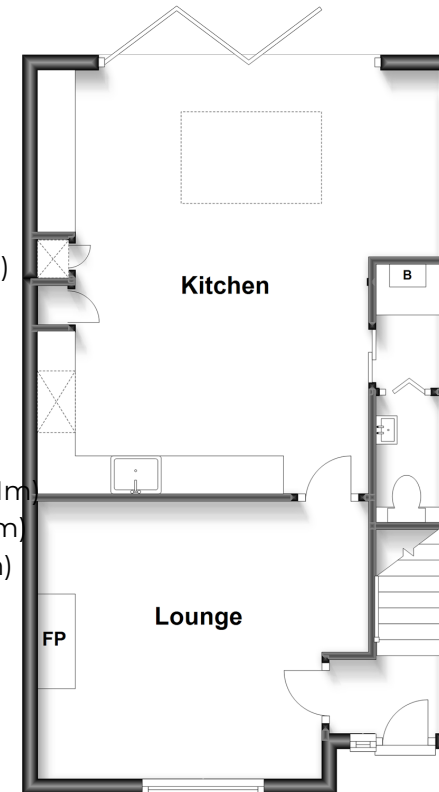
OUTSIDE

Front Garden

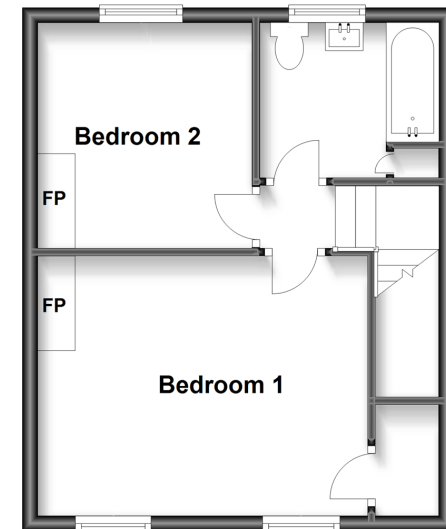
Rear Garden

Off Road Parking at Rear

Ground Floor
Approx. 48.8 sq. metres (525.8 sq. feet)



First Floor
Approx. 34.6 sq. metres (372.9 sq. feet)



Call Eynsford - 01322 862844 ■ wardsofkent.co.uk

- Legal advice should be taken to verify fixtures/fittings, planning, alterations and/or lease details
- Appliances & services are untested, dimensions are approximate and floor plans are not to scale
- Through a Homewise Home For Life Plan people aged 60+ can secure this property for up to 59% less, by purchasing a Lifetime Lease.



12519510/20230722/LP/PP