



Price
£550,000

Freehold

3x  1x  1x 

**South Terrace, High
Street, Farningham,
Kent, DA4**

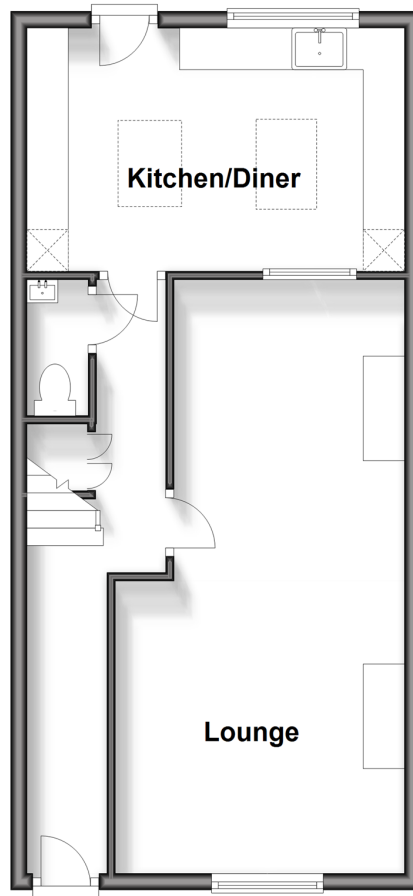
OVER 60?

Secure this property
for up to **59% less!**

Wards
Helping you move forwards

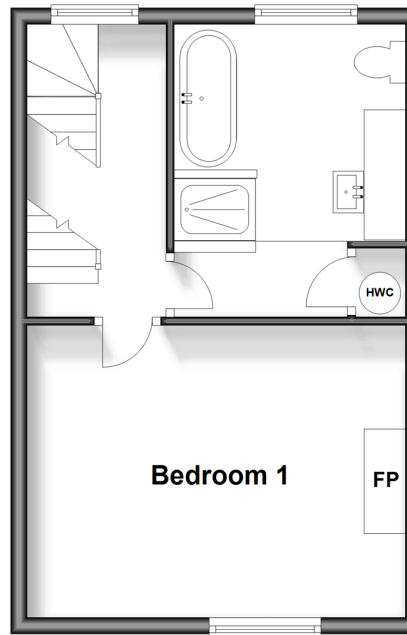
Ground Floor

Approx. 46.2 sq. metres (497.5 sq. feet)



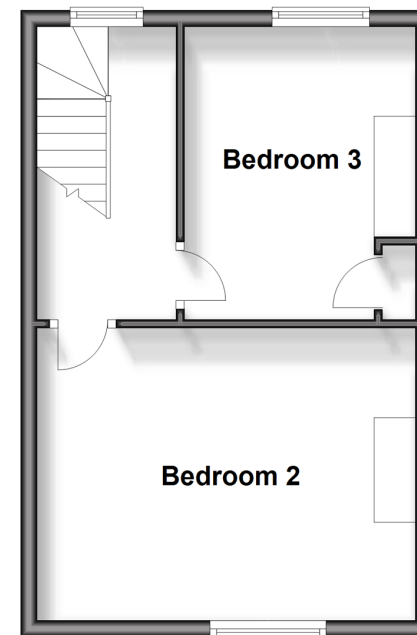
First Floor

Approx. 32.5 sq. metres (349.4 sq. feet)



Second Floor

Approx. 32.5 sq. metres (349.4 sq. feet)



Accommodation

GROUND FLOOR

Hallway
Lounge: 23'5 x 11'4 (7.14m x 3.46m)
Kitchen/Diner: 14'7 x 9'6 (4.45m x 2.90m)
Cloakroom

FIRST FLOOR

Landing
Bedroom 1: 14'9 x 11'5 (4.50m x 3.48m)
Bathroom: 11'5 x 7'8 (3.48m x 2.34m)

SECOND FLOOR

Landing
Bedroom 2: 14'9 x 11'5 (4.50m x 3.48m)
Bedroom 3: 11'4 x 7'9 (3.46m x 2.36m)

OUTSIDE

Rear Shared Access
Rear Garden



Main features

- Beautiful period property with character features
- Large extended bright kitchen
- Recently updated bathroom with underfloor heating
- Beautiful village location with countryside walks
- Great local schools including Anthony Roper



Nearest Schools

Primary Schools: The Anthony Roper Primary 0.8 miles, Horton Kirby C of E Primary 1.3 miles, Downsview Community Primary 2.0 miles

Secondary Schools: Parkwood Hall School 1.7 miles,



Transport Information

Train Stations: Eynsford 1.4 miles, Farningham Road 1.6 miles, Swanley 2.5 miles



Address

South Terrace, High Street, Farningham, Kent, DA4



Directions

For directions to this property please contact us.



Wards
Helping you move forwards

Call Eynsford Branch 01322 862844 ■ wardsofkent.co.uk



■ Legal advice should be taken to verify fixtures/fittings, planning, alterations and/or lease details ■ Appliances & services are untested, dimensions are approximate and floor plans are not to scale
■ Through a Homewise Home For Life Plan people aged 60+ can secure this property for up to 59% less, by purchasing a Lifetime Lease.



12519671/20240311/LP/LP