



Price
£650,000

Freehold

3x  1x  2x 

**Upper Austin Lodge
Cottage, Upper Austin
Lodge Road, Eynsford,
Dartford, Kent, DA4**

OVER 60?

Secure this property
for up to **59% less!**

Wards
Helping you move forwards



Main features

- **Spacious home with a very rural aspect**
- **Plenty of off road parking with garage**
- **Fantastic size reception room**
- **Large front and rear gardens with countryside views**
- **Quiet location with short drive to local amenities**

Accommodation

GROUND FLOOR

Entrance Hall

Lounge: 16'9 x 9'3 (5.11m x 2.82m)

Dining Area: 16'9 x 10'8 (5.11m x 3.25m)

Kitchen: 13'6 x 7'0 (4.12m x 2.14m)

Snug: 10'11 x 7'11 (3.33m x 2.41m)

FIRST FLOOR

Landing

Bedroom 1: (L-shaped) 16'9 x 10'3 (5.11m x 3.13m) plus 5'11 x 2'3 (1.80m x 0.69m)

Bedroom 2: 10'10 x 10'9 (3.30m x 3.28m)

Bedroom 3: 9'11 x 8'0 (3.02m x 2.44m)

Bathroom: 6'7 x 5'9 (2.01m x 1.75m)

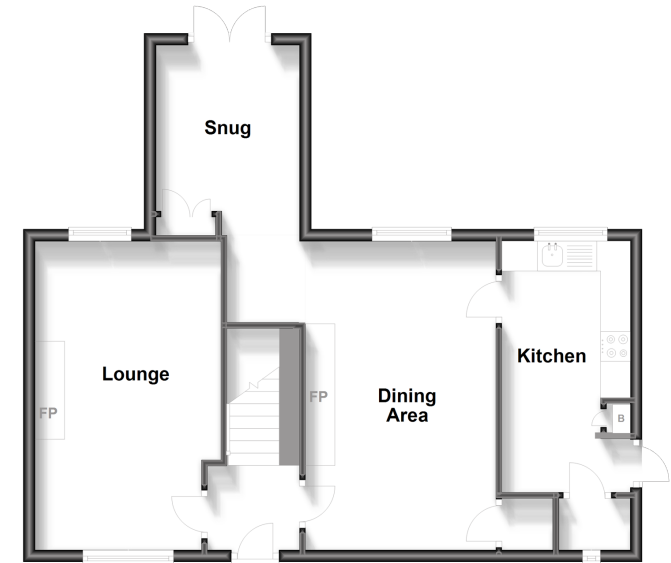
OUTSIDE

Driveway

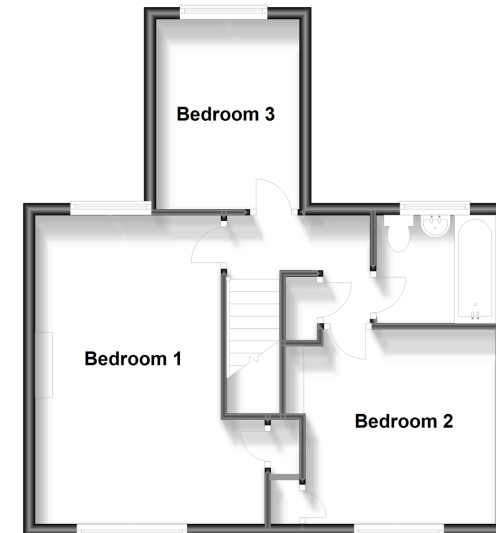
Front Garden and Rear Garden

Garage

Ground Floor
Approx. 59.8 sq. metres (643.4 sq. feet)



First Floor
Approx. 48.1 sq. metres (517.4 sq. feet)



Call Eynsford - 01322 862844 ■ wardsofkent.co.uk

- If buying to let, the energy rating will need to be improved to at least 'E' rating before you can let the property
- Legal advice should be taken to verify fixtures/fittings, planning, alterations and/or lease details
- Appliances & services are untested, dimensions are approximate and floor plans are not to scale
- Through a Homewise Home For Life Plan people aged 60+ can secure this property for up to 59% less, by purchasing a Lifetime Lease.



12519672/20230811/MC/LP