



OVER 60?

Secure this property
for up to **59% less!**

Price

£475,000

Freehold

3x  2x  2x 

**Oliver Crescent,
Farningham, Kent, DA4**

Wards
Helping you move forwards



Main features

- Beautiful private rear garden
- Parking to the rear of the property
- Walking distance to Eynsford train station
- Fantastic reception rooms including large extended kitchen
- Quiet location with local parks on your doorstep

Accommodation

GROUND FLOOR

Porch: 6'1 x 2'2 (1.86m x 0.66m)

Hallway

Lounge: 19'11 x 12'11 (6.07m x 3.94m)

Dining Area: 12'11 x 10'9 (3.94m x 3.28m)

Kitchen: 14'8 x 9'11 (4.47m x 3.02m)

Bathroom: 7'1 x 6'3 (2.16m x 1.91m)

FIRST FLOOR

Landing

Bedroom 1: 11'11 x 11'2 (3.63m x 3.41m)

Bedroom 2: 11'11 x 9'9 (3.63m x 2.97m)

Bedroom 3: 7'7 x 7'1 (2.31m x 2.16m)

Shower Room: 7'6 x 4'5 (2.29m x 1.35m)

OUTSIDE

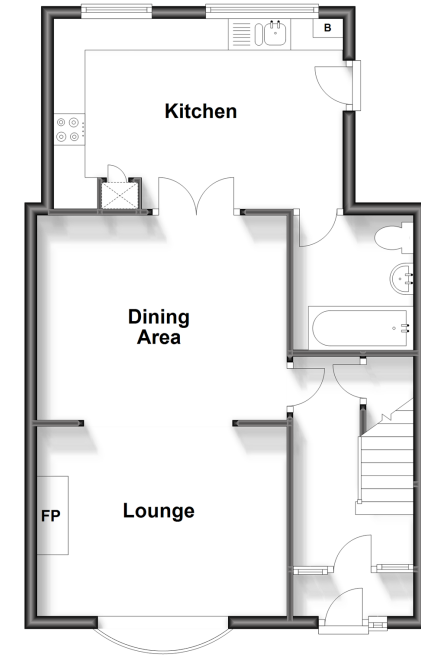
Front & Rear Gardens

Garage

Off Road Parking to Rear

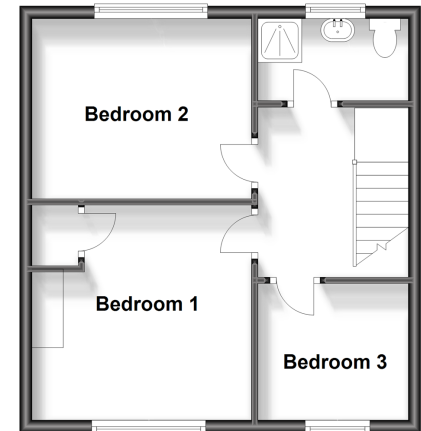
Ground Floor

Approx. 53.2 sq. metres (572.6 sq. feet)



First Floor

Approx. 38.4 sq. metres (413.7 sq. feet)



Call Eynsford - 01322 862844 ■ wardsofkent.co.uk

- Legal advice should be taken to verify fixtures/fittings, planning, alterations and/or lease details
- Appliances & services are untested, dimensions are approximate and floor plans are not to scale
- Through a Homewise Home For Life Plan people aged 60+ can secure this property for up to 59% less, by purchasing a Lifetime Lease.



12519863/20231222/LP/LP