



OVER 60?

Secure this property
for up to **59% less!**

Price

£1,250,000

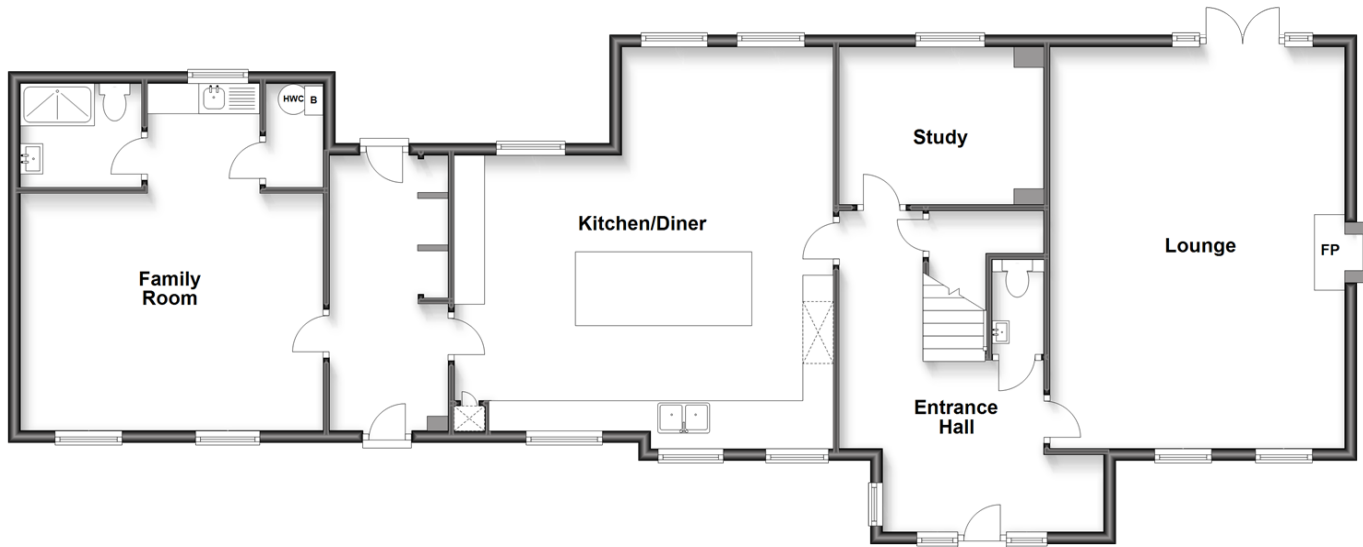
Freehold

4x  3x  3x 

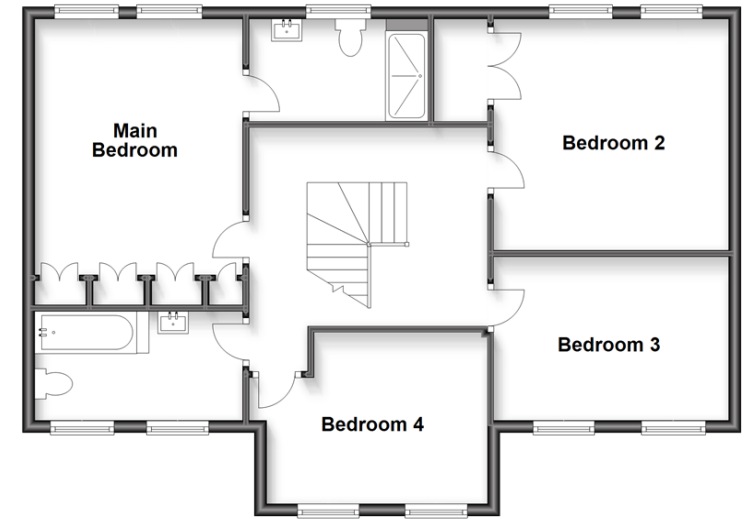
**High Street,
Farningham, Kent, DA4**

Wards
Helping you move forwards

Ground Floor
Approx. 134.8 sq. metres (1451.3 sq. feet)



First Floor
Approx. 80.8 sq. metres (870.1 sq. feet)



Accommodation

GROUND FLOOR

Entrance Hall
Lounge: 21'8 x 16'1 (6.61m x 4.91m)
Study: 10'9 x 8'5 (3.28m x 2.57m)
Kitchen/Diner: 20'0 (6.10m) x 15'0 (4.58m)
narrowing to 11'6 (3.51m)
Family Room: 18'8 x 16'4 (5.69m x 4.98m)
Shower Room
Utility Area: 15'7 x 6'2 (4.75m x 1.88m)

Main Bedroom : 13'4 x 12'6 (4.07m x 3.81m)
En Suite Shower Room
Bedroom 2: 12'9 x 12'4 (3.89m x 3.76m)
Bedroom 3: 12'9 x 8'9 (3.89m x 2.67m)
Bedroom 4: 12'5 x 8'5 (3.79m x 2.57m)
Bathroom

OUTSIDE

Gravelled Front Drive
Rear Garden

FIRST FLOOR

Landing



Main features

- Rarely available detached house
- Modern home with large mature gardens
- Gravelled drive to front
- Beautiful home within the heart of Farningham village
- Close to local amenities



Nearest Schools

Primary Schools: The Anthony Roper Primary 0.7 miles, Horton Kirby C of E Primary 1.3 miles, Downsview Community Primary 2.1 miles

Secondary Schools: Parkwood Hall School 1.8 miles,



Transport Information

Train Stations: Eynsford 1.3 miles, Farningham Road 1.6 miles, Swanley 2.6 miles



Address

High Street, Farningham, Kent, DA4



Directions

For directions to this property please contact us.



Call Eynsford Branch 01322 862844 ■ wardsofkent.co.uk



- Legal advice should be taken to verify fixtures/fittings, planning, alterations and/or lease details
- Appliances & services are untested, dimensions are approximate and floor plans are not to scale
- Through a Homewise Home For Life Plan people aged 60+ can secure this property for up to 59% less, by purchasing a Lifetime Lease.



12519895/20230926/SJ/PP