



**Price**  
**£430,000**

**Freehold**

2x  1x  1x 

**Old Mill Close, Eynsford,  
Kent, DA4**

**OVER 60?**

Secure this property  
for up to **59% less!**

*Wards*  
Helping you move forwards



## Main features

- **Lovely terraced house**
- **Driveway and garage en bloc**
- **Nice rear garden**
- **Charming location with well maintained surroundings**
- **Nearby weir flowing from River Darent**

## Accommodation

### GROUND FLOOR

Entrance Hall  
 Kitchen: 10'9 x 8'11 (3.28m x 2.72m)  
 Lounge/Diner: 13'11 x 12'0 (4.24m x 3.66m)  
 Shower Room

### FIRST FLOOR

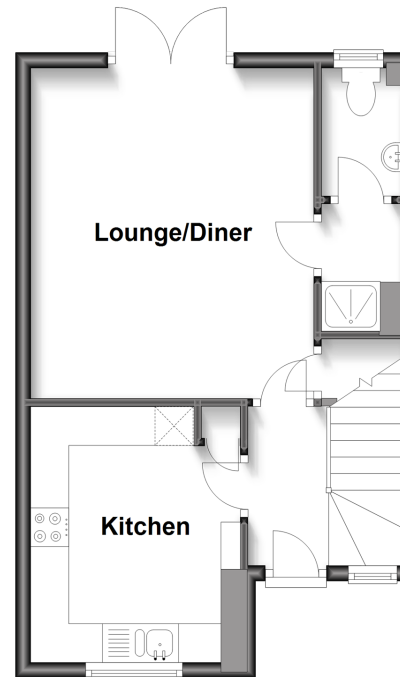
Landing  
 Bedroom 1: 12'3 x 11'10 (3.74m x 3.61m)  
 Bedroom 2: 9'7 x 9'1 (2.92m x 2.77m)  
 Bathroom: 6'5 x 6'5 (1.96m x 1.96m)

### OUTSIDE

Driveway to Front  
 Well Cared for Rear Garden  
 Garage En Bloc

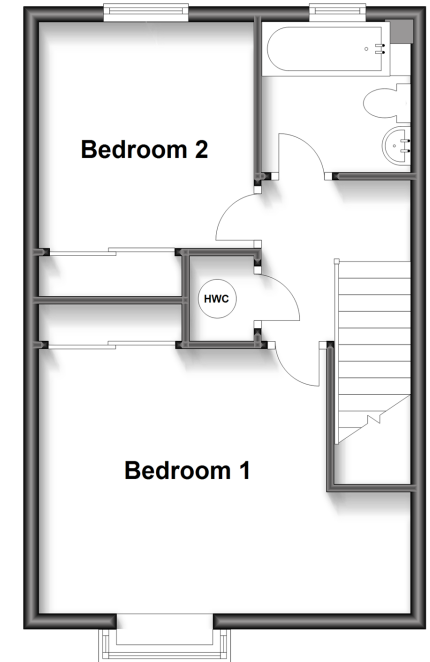
### Ground Floor

Approx. 34.7 sq. metres (373.8 sq. feet)



### First Floor

Approx. 37.5 sq. metres (403.3 sq. feet)



**Call Eynsford - 01322 862844 ■ [wardsofkent.co.uk](http://wardsofkent.co.uk)**

■ Legal advice should be taken to verify fixtures/fittings, planning, alterations and/or lease details  
 ■ Through a Homewise Home For Life Plan people aged 60+ can secure this property for up to 59% less, by purchasing a Lifetime Lease.

■ Appliances & services are untested, dimensions are approximate and floor plans are not to scale



12519905/20230527/PP/PP