



**OVER 60?**

Secure this property  
for up to **59% less!**

**Guide Price**  
**£435,000**

**Freehold**

2x  1x  2x 

**Alton Cottages, High  
Street, Eynsford, Kent,  
DA4**

*Wards*  
Helping you move forwards



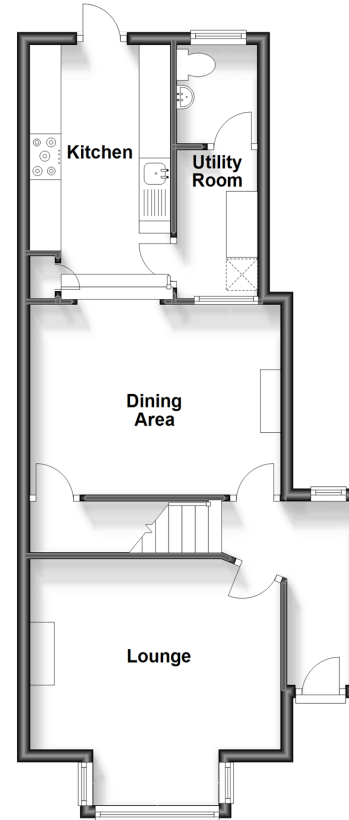


## Main features

- Beautiful low maintenance rear garden with detached garage
- Walking distance to Eynsford train station
- Stunning character cottage
- Short walk to Anthony Roper School
- Countryside walks

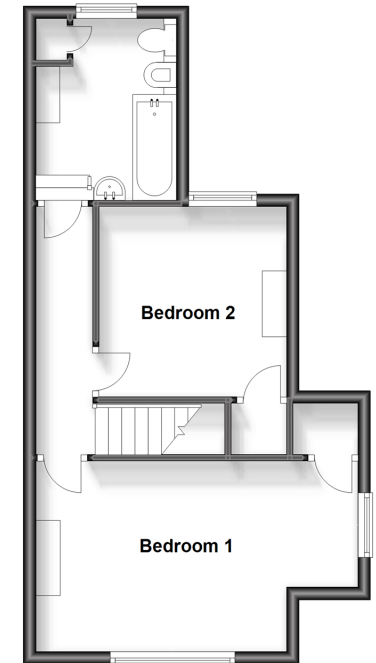
### Split Level Ground Floor

Approx. 48.7 sq. metres (524.0 sq. feet)



### Split Level First Floor

Approx. 38.6 sq. metres (415.1 sq. feet)



## Accommodation

### SPLIT LEVEL GROUND FLOOR

Hallway

Lounge: 13'1 x 8'9 (3.99m x 2.67m)

Dining Area: 13'2 x 10'0 (4.02m x 3.05m)

Kitchen: 14'1 x 7'6 (4.30m x 2.29m)

Utility Room: 7'8 x 4'1 (2.34m x 1.25m)

Cloakroom: 4'11 x 3'9 (1.50m x 1.14m)

### SPLIT LEVEL FIRST FLOOR

Landing

Bedroom 1: 16'10 x 9'10 (5.13m x 3.00m)

Bedroom 2: 10'0 x 9'11 (3.05m x 3.02m)

Bathroom: 9'4 x 7'4 (2.85m x 2.24m)

### OUTSIDE

Front Garden

Rear Garden

Garage: 18'7 x 8'8 (5.67m x 2.64m)

**Call Eynsford - 01322 862844 ■ [wardsofkent.co.uk](http://wardsofkent.co.uk)**

- Legal advice should be taken to verify fixtures/fittings, planning, alterations and/or lease details
- Appliances & services are untested, dimensions are approximate and floor plans are not to scale
- Through a Homewise Home For Life Plan people aged 60+ can secure this property for up to 59% less, by purchasing a Lifetime Lease.



12519969/20240413/MC/LP