



Price

£1,250,000

Freehold

5x  2x  2x 

**High Street, Eynsford,
Kent, DA4**

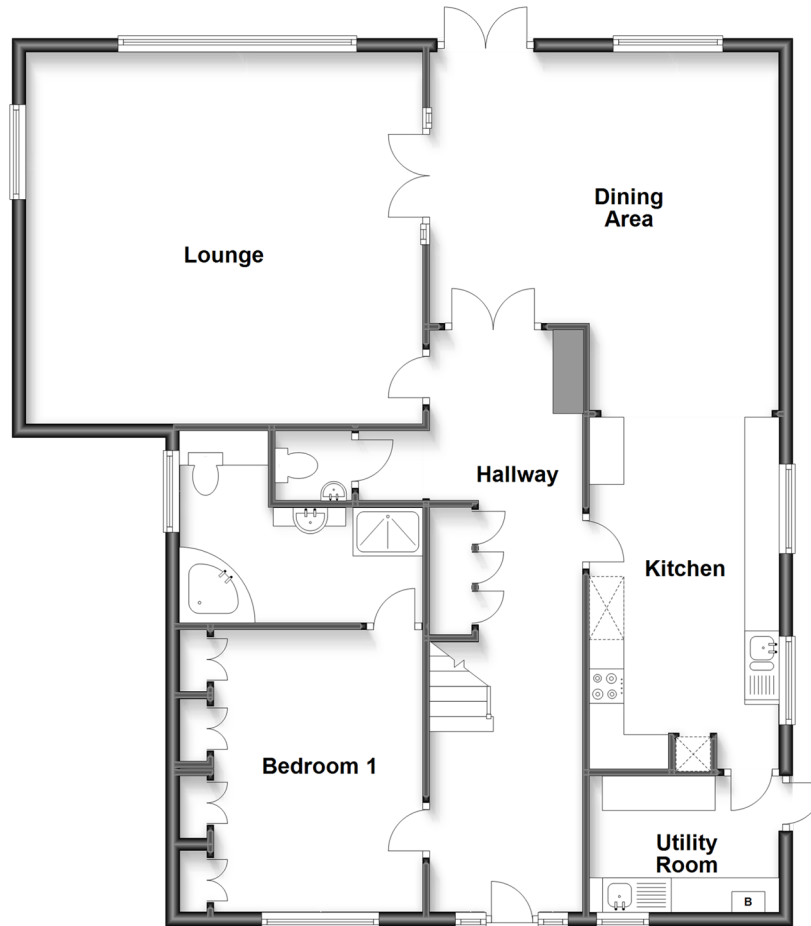
OVER 60?

Secure this property
for up to **59% less!**

Wards
Helping you move forwards

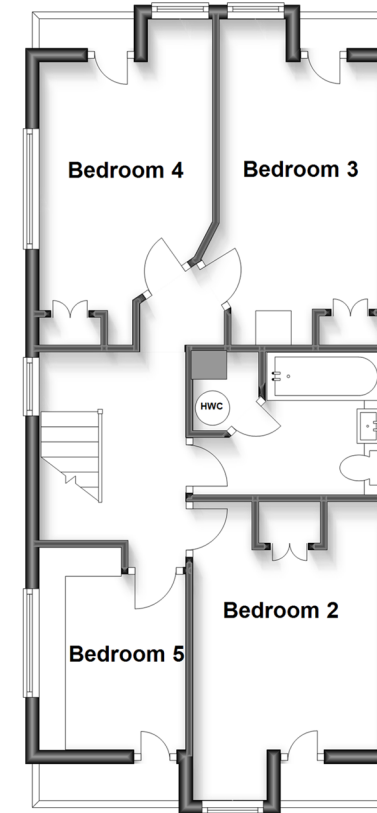
Ground Floor

Approx. 120.9 sq. metres (1301.2 sq. feet)



First Floor

Approx. 51.9 sq. metres (559.0 sq. feet)



Accommodation

GROUND FLOOR

Hallway: 28'6 x 7'4 (8.69m x 2.24m)

Cloakroom

Lounge: 18'9 x 17'6 (5.72m x 5.34m)

Dining Area: 16'8 x 16'8 (5.08m x 5.08m)

Kitchen: 16'5 x 9'2 (5.01m x 2.80m)

Utility Room: 9'0 x 6'4 (2.75m x 1.93m)

Bedroom 1: 14'0 x 10'7 (4.27m x 3.23m)

En Suite Bathroom: 12'6 x 9'3 (3.81m x 2.82m)

FIRST FLOOR

Landing

Bedroom 2: 12'2 x 8'3 (3.71m x 2.52m)

Bedroom 3: 11'7 x 9'2 (3.53m x 2.80m)

Bedroom 4: 11'5 x 8'2 (3.48m x 2.49m)

Bedroom 5: 9'6 x 7'4 (2.90m x 2.24m)

Bathroom: 9'11 x 6'8 (3.02m x 2.03m)

OUTSIDE

Drive and Front Garden

Rear Garden

Garage



Main features

- Spacious detached house
- Central village location
- Driveway and garage
- Cul-de-sac setting with views over the River Darent and historic Eynsford Castle
- Excellent transport links including M2/A2 and M20/M25



Nearest Schools

Primary Schools: The Anthony Roper Primary 0.0 miles



Transport Information

Train Stations: Eynsford 0.7 miles, Farningham Road 2.9 miles, Shoreham 3.0 miles



Address

High Street, Eynsford, Kent, DA4



Directions

For directions to this property please contact us.



Wards
Helping you move forwards

Call Eynsford Branch 01322 862844 ■ wardsofkent.co.uk



- Legal advice should be taken to verify fixtures/fittings, planning, alterations and/or lease details
- Appliances & services are untested, dimensions are approximate and floor plans are not to scale
- Through a Homewise Home For Life Plan people aged 60+ can secure this property for up to 59% less, by purchasing a Lifetime Lease.



12519985/20230612/SJ/PP