



**Price**

**£400,000**

**Freehold**

3x  1x  2x 

**Forge Lane, Horton  
Kirby, Kent, DA4**

**OVER 60?**

Secure this property  
for up to **59% less!**

*Wards*  
Helping you move forwards





## Main features

- **Fabulous semi-detached chalet style bungalow**
- **Detached garage at the rear**
- **No onward chain**
- **Nice semi-rural location with local amenities**
- **Excellent access to motorway network including M2/A2 and M20/M25**

## Accommodation

### GROUND FLOOR

Entrance Hall

Lounge: 18'9 x 11'4 (5.72m x 3.46m)

Dining Room: 11'9 x 8'9 (3.58m x 2.67m)

Kitchen: 11'9 x 8'9 (3.58m x 2.67m)

Utility Room: 10'0 x 5'5 (3.05m x 1.65m)

Shower Room: 8'7 x 5'9 (2.62m x 1.75m)

Bedroom 2: 11'9 x 11'4 (3.58m x 3.46m)

### FIRST FLOOR

Landing

Bedroom 1: 13'9 x 8'2 (4.19m x 2.49m)

Bedroom 3: 10'7 x 8'0 (3.23m x 2.44m)

Toilet

### OUTSIDE

Front Garden

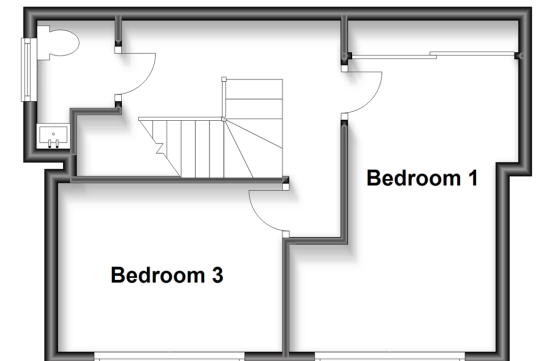
Rear Garden

Garage: 16'0 x 9'4 (4.88m x 2.85m)

**Ground Floor**  
Approx. 74.0 sq. metres (796.9 sq. feet)

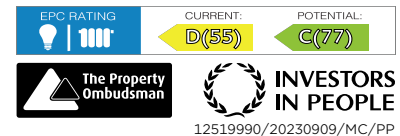


**First Floor**  
Approx. 32.4 sq. metres (349.0 sq. feet)



**Call Eynsford - 01322 862844 ■ [wardsofkent.co.uk](http://wardsofkent.co.uk)**

- Legal advice should be taken to verify fixtures/fittings, planning, alterations and/or lease details
- Appliances & services are untested, dimensions are approximate and floor plans are not to scale
- Through a Homewise Home For Life Plan people aged 60+ can secure this property for up to 59% less, by purchasing a Lifetime Lease.



12519990/20230909/MC/PP