



OVER 60?

Secure this property
for up to **59% less!**

Price

£475,000

Freehold

3x  2x  1x 

**Forge Lane, Horton
Kirby, Kent, DA4**

Wards
Helping you move forwards



Main features

- **Lovely semi-detached bungalow**
- **Garage and driveway to the front**
- **Charming village setting with great countryside walks**
- **The local co-op is a short walk as are the 2 pubs**
- **Short drive to motorway network**

Accommodation

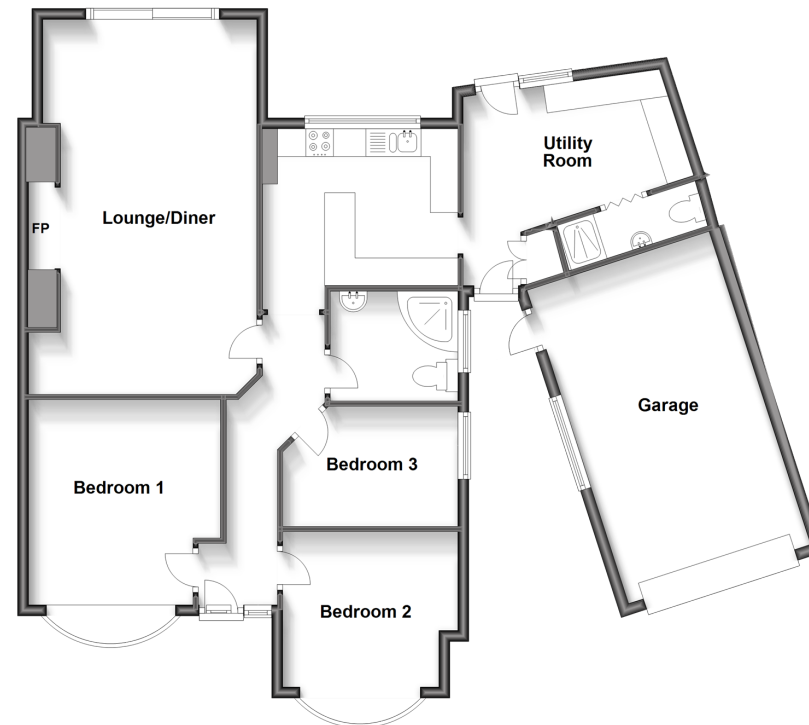
GROUND FLOOR

Lounge/Diner: 22'3 x 12'8 (6.79m x 3.86m)
 Kitchen: 11'8 x 9'4 (3.56m x 2.85m)
 Utility Room: 10'3 x 6'8 (3.13m x 2.03m)
 Shower Room
 Bedroom 1: 12'3 x 11'2 (3.74m x 3.41m)
 Bedroom 2: 9'6 x 9'5 (2.90m x 2.87m)
 Bedroom 3: 11'2 x 6'5 (3.41m x 1.96m)
 Bathroom: 8'4 x 6'3 (2.54m x 1.91m)

OUTSIDE

Large Front Garden
 Driveway
 Rear Garden
 Garage

Ground Floor
 Approx. 115.4 sq. metres (1242.6 sq. feet)



Call Eynsford - 01322 862844 ■ wardsofkent.co.uk

■ Legal advice should be taken to verify fixtures/fittings, planning, alterations and/or lease details
 ■ Through a Homewise Home For Life Plan people aged 60+ can secure this property for up to 59% less, by purchasing a Lifetime Lease.

■ Appliances & services are untested, dimensions are approximate and floor plans are not to scale



12520005/20230510/MC/PP