



Price
£625,000

Freehold

3x  2x  1x 

**South Hall Close,
Farningham, Dartford,
Kent, DA4**

OVER 60?

Secure this property
for up to **59% less!**

Wards
Helping you move forwards



Main features

- Plenty of off road parking with double garage
- Quiet location down a private road
- Fantastic local commuting links via Eynsford train station
- Beautiful village location
- Great local schools including Anthony Roper

Accommodation

GROUND FLOOR

Entrance Hall
Cloakroom
Lounge/Diner: (L-shaped) 17'9 x 12'8 (5.41m x 3.86m) plus 10'7 x 8'3 (3.23m x 2.52m)
Kitchen: 13'9 x 8'4 (4.19m x 2.54m)
Shower Room
Study/Bedroom 3: 10'8 x 8'9 (3.25m x 2.67m)

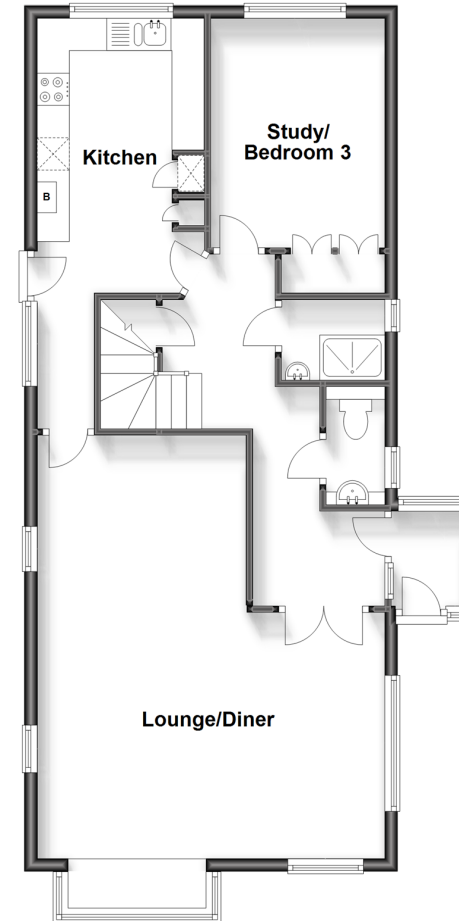
FIRST FLOOR

Landing
Bedroom 1: 13'9 x 11'2 (4.19m x 3.41m)
Bedroom 2: 13'0 x 11'3 (3.97m x 3.43m)
Bathroom: 8'2 x 5'8 (2.49m x 1.73m)

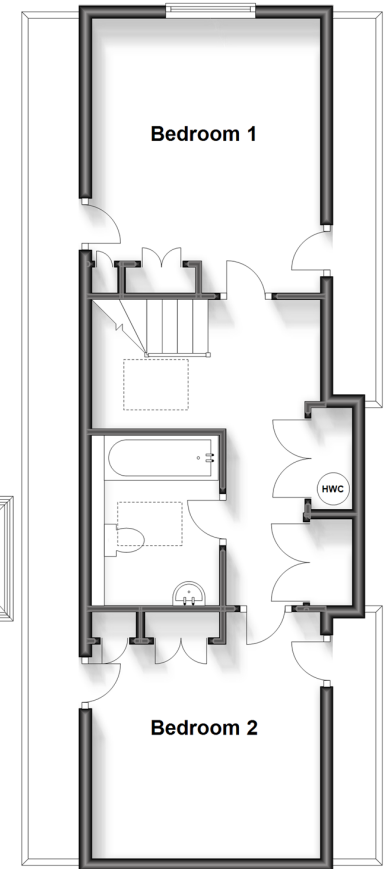
OUTSIDE

Front garden
Rear garden
Garage

Ground Floor
Approx. 73.1 sq. metres (786.4 sq. feet)



First Floor
Approx. 47.9 sq. metres (515.8 sq. feet)



Call Eynsford - 01322 862844 ■ wardsofkent.co.uk

- Legal advice should be taken to verify fixtures/fittings, planning, alterations and/or lease details
- Appliances & services are untested, dimensions are approximate and floor plans are not to scale
- Through a Homewise Home For Life Plan people aged 60+ can secure this property for up to 59% less, by purchasing a Lifetime Lease.



12520017/20231021/MC/LP