



OVER 60?

Secure this property
for up to **59% less!**

Price
£450,000

Freehold

3x  1x  1x 

**Alton Cottages, High
Street, Eynsford, Kent,
DA4**

Wards
Helping you move forwards



Main features

- Extended terraced house
- Single garage at the rear of the property
- Large lounge/dining room
- Downstairs cloakroom/WC
- Large kitchen/family room

Accommodation

GROUND FLOOR

Lounge/Diner: 23'5 x 13'1 (7.14m x 3.99m)

Conservatory Area: 26'7 x 12'1 (8.11m x 3.69m)

Cloakroom: 4'8 x 2'2 (1.42m x 0.66m)

SPLIT LEVEL FIRST FLOOR

Landing

Bedroom 1: 13'1 x 9'11 (3.99m x 3.02m)

Bedroom 3: 13'1 x 7'1 (3.99m x 2.16m)

Bathroom: 9'4 x 7'5 (2.85m x 2.26m)

SECOND FLOOR

Landing

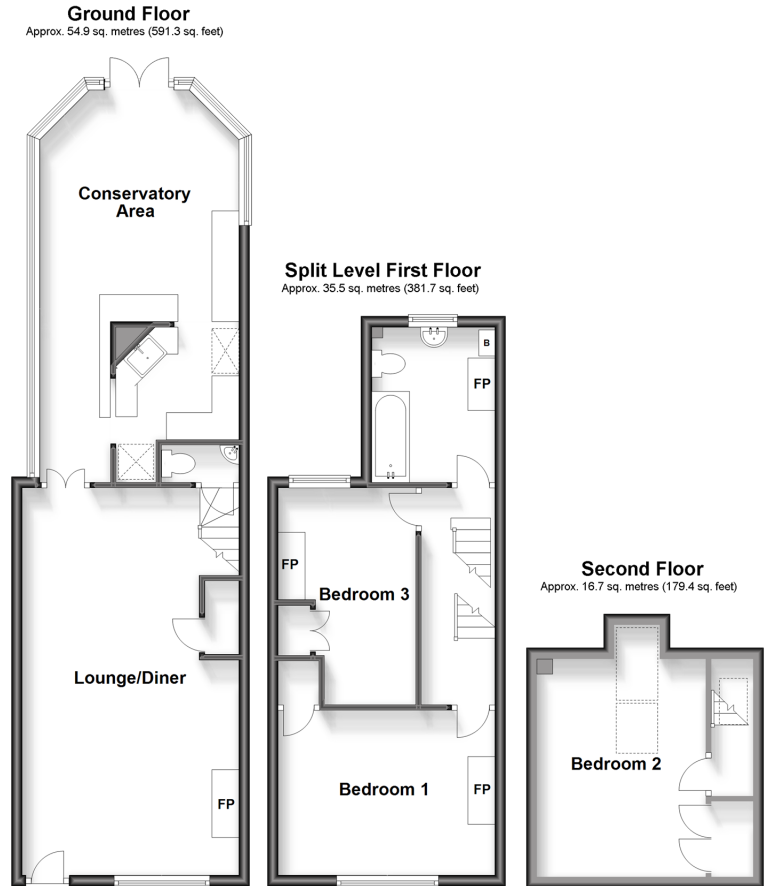
Bedroom 2: 13'1 x 10'1 (3.99m x 3.08m)

OUTSIDE

Front Garden

Rear Garden

Garage



Call Eynsford - 01322 862844 ■ wardsofkent.co.uk

- Legal advice should be taken to verify fixtures/fittings, planning, alterations and/or lease details
- Appliances & services are untested, dimensions are approximate and floor plans are not to scale
- Through a Homewise Home For Life Plan people aged 60+ can secure this property for up to 59% less, by purchasing a Lifetime Lease.



12520048/20230822/LP/LP