



OVER 60?

Secure this property
for up to **59% less!**

Price

£300,000

Freehold

2x  1x  1x 

**Elizabeth Place, High
Street, Eynsford, Kent,
DA4**

Wards
Helping you move forwards



Main features

- Low maintenance courtyard garden
- Secluded location with only 5 other cottages
- Fantastic local commuting links
- Beautiful village location with countryside walks
- Great local schools including Anthony Roper

Accommodation

GROUND FLOOR

Lounge: 11'5 x 10'9 (3.48m x 3.28m)

Kitchen: 10'9 x 9'5 (3.28m x 2.87m)

SPLIT LEVEL FIRST FLOOR

Landing

Bedroom 1: 11'4 x 10'10 (3.46m x 3.30m)

Nursery: 6'9 x 6'0 (2.06m x 1.83m)

Bathroom: (L-shaped) 6'7 x 4'1 (2.01m x 1.25m) plus 2'7 x 2'2 (0.79m x 0.66m)

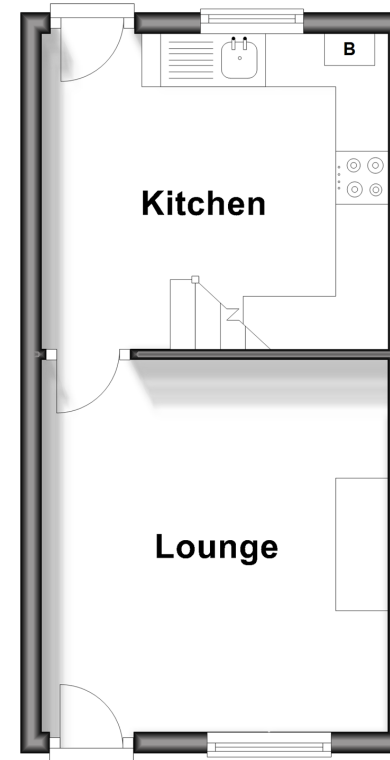
OUTSIDE

Front Garden

Courtyard Garden

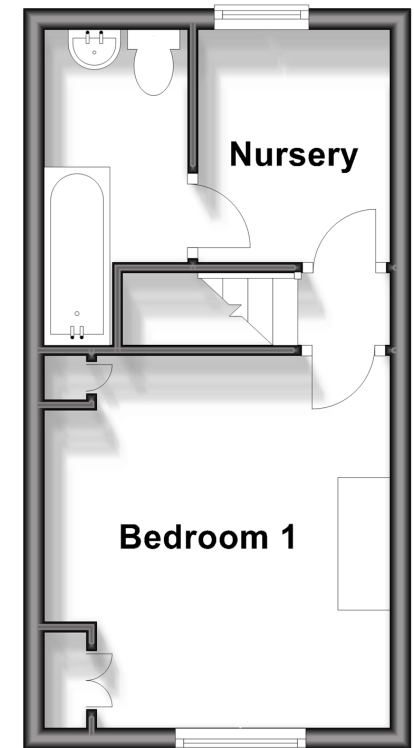
Ground Floor

Approx. 21.8 sq. metres (234.6 sq. feet)



Split Level First Floor

Approx. 21.8 sq. metres (234.6 sq. feet)



Call Eynsford - 01322 862844 ■ wardsofkent.co.uk

- Legal advice should be taken to verify fixtures/fittings, planning, alterations and/or lease details
- Appliances & services are untested, dimensions are approximate and floor plans are not to scale
- Through a Homewise Home For Life Plan people aged 60+ can secure this property for up to 59% less, by purchasing a Lifetime Lease.



12520070/20231122/SJ/LP