



Price
£725,000

Freehold

3x  1x  1x 

**Station Road, Eynsford,
Dartford, Kent, DA4**

OVER 60?

Secure this property
for up to **59% less!**

Wards
Helping you move forwards



Main features

- Off-road parking and garage en bloc
- Private low maintenance garden
- Short walk to Eynsford train station
- Refurbished to a beautiful standard throughout
- Stunning location within the heart of the village

Accommodation

GROUND FLOOR

Hallway

Lounge: 19'4 x 12'8 (5.90m x 3.86m)

Kitchen/Diner: 18'4 x 12'4 (5.59m x 3.76m)

Cloakroom: 8'5 x 4'0 (2.57m x 1.22m)

Bedroom 1: 11'9 x 11'4 (3.58m x 3.46m)

Bedroom 2: 11'9 x 11'3 (3.58m x 3.43m)

Bedroom 3: 9'6 x 9'6 (2.90m x 2.90m)

Bathroom: 8'5 x 7'5 (2.57m x 2.26m)

OUTSIDE

Front Garden

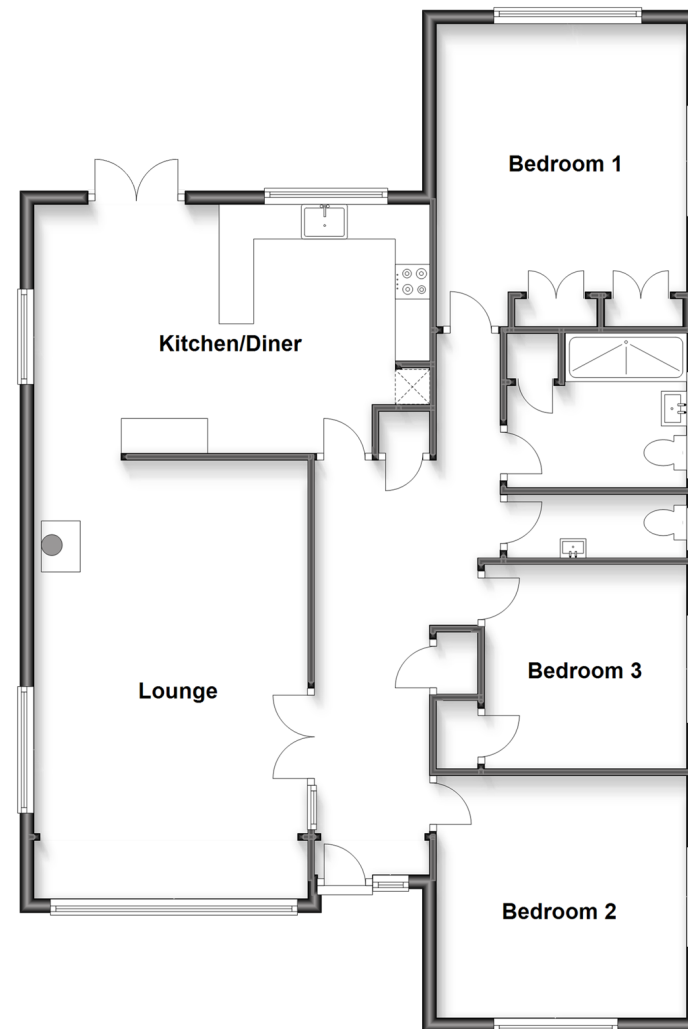
Rear Garden

Garage En Bloc

Off-Road Parking

Ground Floor

Approx. 109.7 sq. metres (1181.2 sq. feet)



Call Eynsford - 01322 862844 ■ wardsofkent.co.uk

- Legal advice should be taken to verify fixtures/fittings, planning, alterations and/or lease details
- Appliances & services are untested, dimensions are approximate and floor plans are not to scale
- Through a Homewise Home For Life Plan people aged 60+ can secure this property for up to 59% less, by purchasing a Lifetime Lease.



12520115/20240221/SJ/LP