



Price
£230,000

Leasehold

1x  1x  1x 

**Basing Lodge, Julian
Road, Folkestone, Kent,
CT19**

OVER 60?

Secure this property
for up to **59% less!**

Wards
Helping you move forwards



Main features

- Three private gardens!
- High ceilings allowing natural light to flood in
- Period features
- Separate basement for extra storage
- Highly sought after location

Accommodation

GROUND FLOOR

Hallway

Lounge: 13'1 x 12'4 (3.99m x 3.76m)

Kitchen: 9'8 x 5'7 (2.95m x 1.70m)

Bedroom: 13'0 x 11'7 (3.97m x 3.53m)

Bathroom: 9'1 x 4'1 (2.77m x 1.25m)

BASEMENT

Basement

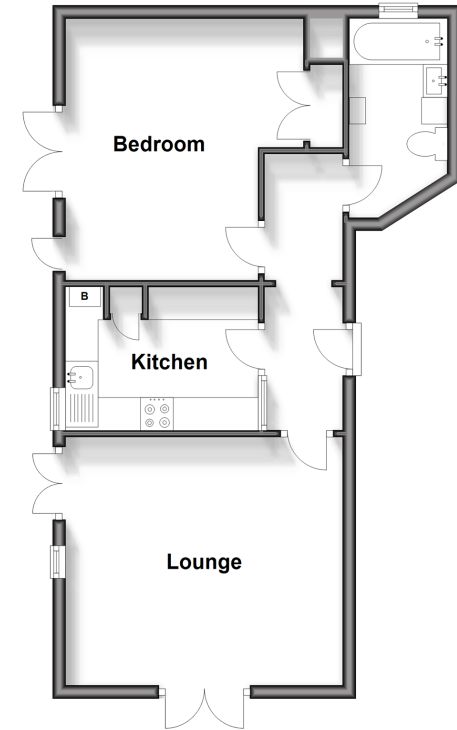
OUTSIDE

Private Gardens

Communal Gardens

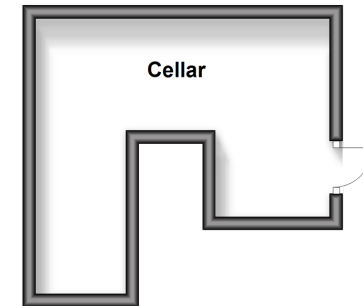
Ground Floor

Approx. 47.5 sq. metres (511.5 sq. feet)



Basement

Approx. 13.4 sq. metres (144.2 sq. feet)



Call Folkestone - 01303 256505 ■ wardsofkent.co.uk

- Legal advice should be taken to verify fixtures/fittings, planning, alterations and/or lease details
- Appliances & services are untested, dimensions are approximate and floor plans are not to scale
- Through a Homewise Home For Life Plan people aged 60+ can secure this property for up to 59% less, by purchasing a Lifetime Lease.



12623803/20240228/LS/CW