



Guide Price
£375,000

Freehold

3x  2x  2x 

**Demozay Close,
Hawkinge, Folkestone,
Kent, CT18**

OVER 60?

Secure this property
for up to **59% less!**

Wards
Helping you move forwards



Main features

- Gated parking and garage
- Corner plot with wrap around garden
- Close to local schooling and amenities
- En-suite to main bedroom
- Conservatory

Accommodation

GROUND FLOOR

Hallway

Kitchen: 10'4 x 7'7 (3.15m x 2.31m)

Lounge: 16'1 x 10'5 (4.91m x 3.18m)

Dining Room: 10'0 x 9'8 (3.05m x 2.95m)

Conservatory: 10'1 x 9'5 (3.08m x 2.87m)

Downstairs Toilet

FIRST FLOOR

Landing

Bedroom 1: 13'4 x 10'2 (4.07m x 3.10m)

En-suite

Bedroom 2: 9'11 x 9'8 (3.02m x 2.95m)

Bedroom 3: 10'2 x 8'9 (3.10m x 2.67m)

Bathroom

OUTSIDE

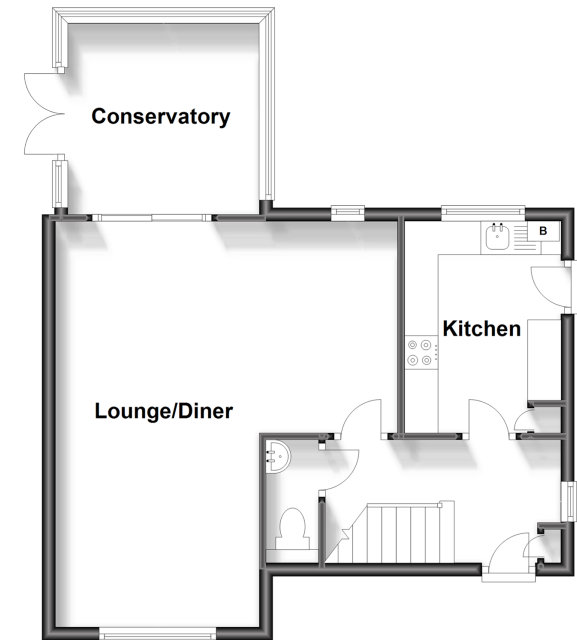
Garage

Off Road Parking

Wrap Around Garden

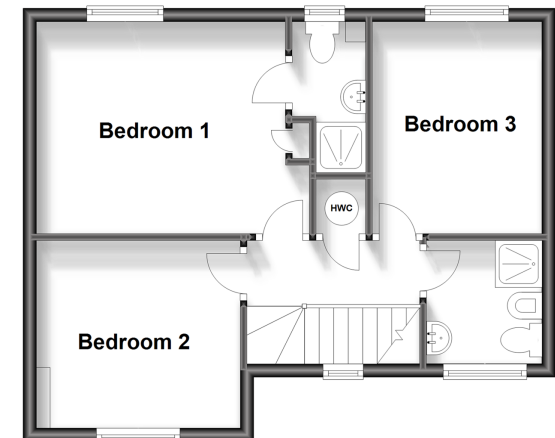
Ground Floor

Approx. 49.9 sq. metres (536.9 sq. feet)



First Floor

Approx. 41.4 sq. metres (446.1 sq. feet)



Call Folkestone - 01303 256505 ■ wardsof Kent.co.uk

- Legal advice should be taken to verify fixtures/fittings, planning, alterations and/or lease details
- Appliances & services are untested, dimensions are approximate and floor plans are not to scale
- Through a Homewise Home For Life Plan people aged 60+ can secure this property for up to 59% less, by purchasing a Lifetime Lease.



12625740/20231111/LS/CW