



OVER 60?

Secure this property
for up to **59% less!**

Price

£220,000

Leasehold

2x  1x  1x 

**Cheriton Gardens,
Folkestone, Kent, CT20**

Wards
Helping you move forwards



Main features

- Lower ground floor apartment with a beautiful new kitchen
- Renovated to a high standard throughout
- Short walk to the town and beautiful Leas
- Perfect for first time buyers
- Handy separate utility area
- Resident parking area

Accommodation

LOWER GROUND FLOOR

Hallway

Kitchen: 21'0 x 6'1 (6.41m x 1.86m)

Utility Area

Cloakroom

Lounge : 16'11 x 14'9 (5.16m x 4.50m)

Bedroom 2 : 14'9 x 9'6 (4.50m x 2.90m)

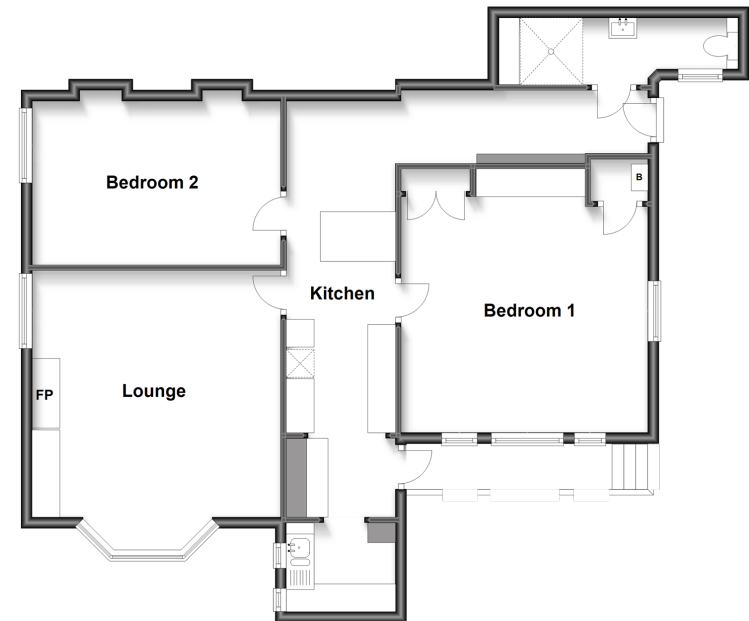
Bedroom 1 : 14'5 x 14'3 (4.40m x 4.35m)

OUTSIDE

Residents Parking

Lower Ground Floor

Approx. 85.7 sq. metres (922.1 sq. feet)



Call Folkestone - 01303 256505 ■ wardsfolkent.co.uk

■ Legal advice should be taken to verify fixtures/fittings, planning, alterations and/or lease details
 ■ Through a Homewise Home For Life Plan people aged 60+ can secure this property for up to 59% less, by purchasing a Lifetime Lease.

■ Appliances & services are untested, dimensions are approximate and floor plans are not to scale



12628544/20230111/AP1/CW