



**Price**

**£100,000**

**Leasehold**

2x  1x  1x 

**Harvey House, Harvey  
Street, Folkestone, Kent,  
CT20**

*Wards*  
Helping you move forwards





## Main features

- Close to town centre and local amenities
- Within walking distance to Folkestone Central Station
- Take a stroll down to the vibrant Harbour Arm and sea front
- Ideal for first time buy or any buy to let investor
- Great access to the A20/M20

## Accommodation

### GROUND FLOOR

Kitchen/Lounge: 23'3 x 15'10 (7.09m x 4.83m)

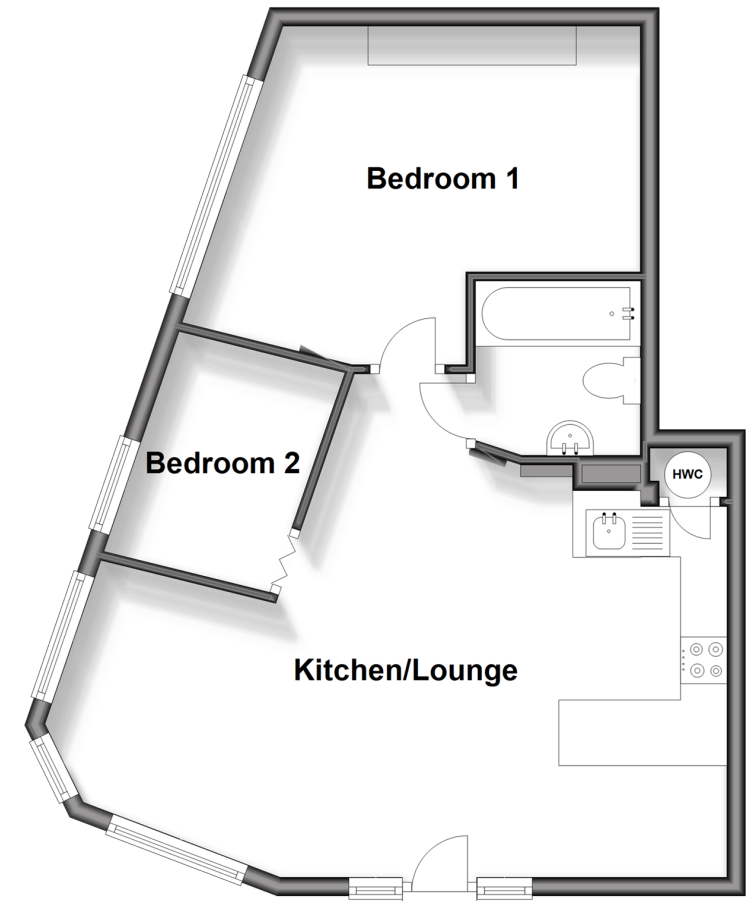
Bedroom 1: 13'8 x 10'5 (4.17m x 3.18m)

Bedroom 2: 8'7 x 4'11 (2.62m x 1.50m)

Bathroom: 6'0 x 5'10 (1.83m x 1.78m)

### Ground Floor

Approx. 51.8 sq. metres (558.1 sq. feet)



**Call Folkestone - 01303 256505 ■ [wardsof Kent.co.uk](http://wardsof Kent.co.uk)**

- If buying to let, the energy rating will need to be improved to at least 'E' rating before you can let the property
- Legal advice should be taken to verify fixtures/fittings, planning, alterations and/or lease details
- Appliances & services are untested, dimensions are approximate and floor plans are not to scale



12635566/20240118/LS/CW