



**Price**

**£80,000**

**Leasehold**

1x  1x  1x 

**Eastcliffe Heights,  
Radnor Bridge Road,  
Folkestone, Kent, CT20**

**OVER 60?**

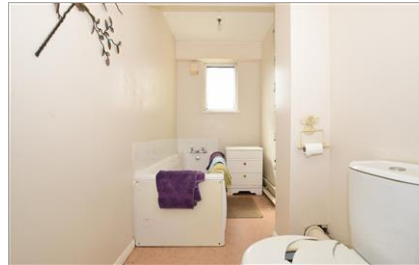
Secure this property  
for up to **59% less!**



**Video Tour available**

*Wards*

Helping you move forwards



## Main features

- **Cash buyers only**
- **A stroll away from the popular Harbour Arm and sea front**
- **Gated parking**
- **Close to local amenities**
- **Great access to A20/M20 making it perfect for commuters**

## Accommodation

### UPPER GROUND FLOOR

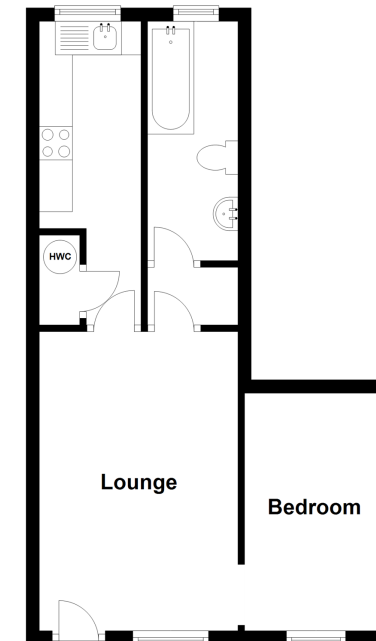
Lounge: 14'8 x 9'10 (4.47m x 3.00m)  
 Kitchen: 10'9 x 4'11 (3.28m x 1.50m)  
 Bathroom: 12'0 x 4'7 (3.66m x 1.40m)  
 Bedroom: 11'7 x 7'8 (3.53m x 2.34m)

### OUTSIDE

Off Road Parking

### Upper Ground Floor

Approx. 34.9 sq. metres (375.8 sq. feet)



**Call Folkestone - 01303 256505 ■ [wardsfolkent.co.uk](http://wardsfolkent.co.uk)**

■ Legal advice should be taken to verify fixtures/fittings, planning, alterations and/or lease details  
 ■ Through a Homewise Home For Life Plan people aged 60+ can secure this property for up to 59% less, by purchasing a Lifetime Lease.

■ Appliances & services are untested, dimensions are approximate and floor plans are not to scale