



**OVER 60?**

You could get up to  
**59% off** the price!\*

**Price**  
**£310,000**

**Leasehold**

2x  1x  1x 

**Broadfield Court,  
Broadfield Road,  
Folkestone, Kent, CT20**

*Wards*  
Helping you move forwards





## Main features

- Prestigious and sought after location
- Detached garage and off road parking
- Being sold with no onward chain
- Private garden, perfect for entertaining friends and family
- Short walk to Folkestone West station

## Accommodation

### GROUND FLOOR

#### Porch

#### Entrance hall

**Lounge/Diner** : 20'11 x 12'11  
(6.38m x 3.94m)

**Kitchen** : 9'6 x 6'10 (2.90m x 2.08m)

**Bedroom 1**: 16'0 x 13'10 (4.88m x 4.22m)

**Bedroom 2**: 13'10 x 12'6 (4.22m x 3.81m)

#### Bathroom

### OUTSIDE

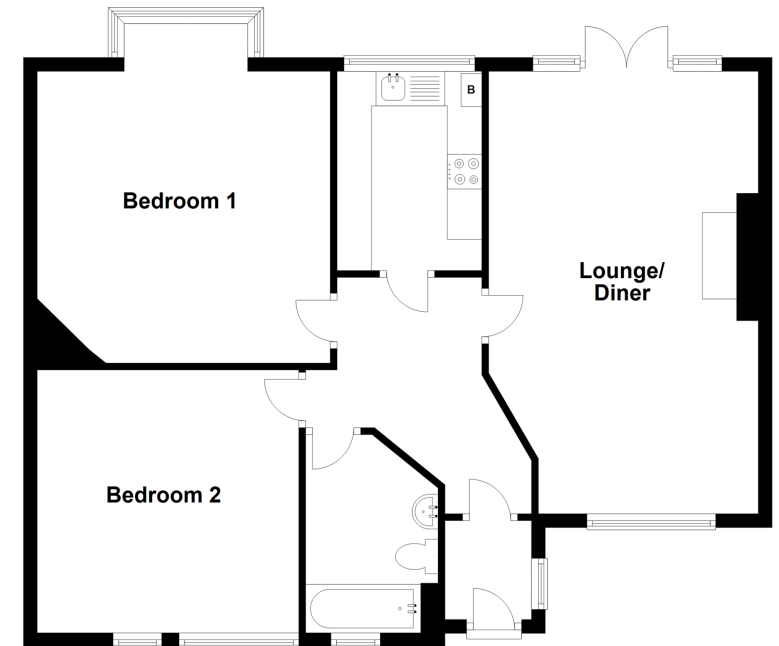
#### Garden to Front & Rear

#### Off Road Parking

#### Detached Garage

### Ground Floor

Approx. 80.4 sq. metres (865.9 sq. feet)



**Call Folkestone - 01303 256505 ■ [wardsof Kent.co.uk](http://wardsof Kent.co.uk)**

- Legal advice should be taken to verify fixtures/fittings, planning, alterations and/or lease details
- Appliances & services are untested, dimensions are approximate and floor plans are not to scale
- Our Homewise partnership offer a 'Home for Life' plan to buyers over 60, granting a lifetime lease for your protection and reducing the purchase price by up to 59%



12636785/20220729/LO/CW