



**Price**  
**£250,000**

**Leasehold**

2x  1x  1x 

**The Old High Street,  
Folkestone, Kent, CT20**

*Wards*  
Helping you move forwards





## Main features

- Beautifully refurbished and presented first floor apartment
- Ready to move straight into
- A stone's throw from the Folkestone Harbour
- Set in the rapidly developing heart of Folkestone's Creative Quarter
- No onward chain allowing a speedy purchase

## Accommodation

### FIRST FLOOR

Entrance Hall

Lounge/Kitchen: 19'1 x 13'5 (5.82m x 4.09m)

Bedroom 1: 14'0 x 9'2 (4.27m x 2.80m)

Bedroom 2: 11'5 x 8'7 (3.48m x 2.62m)

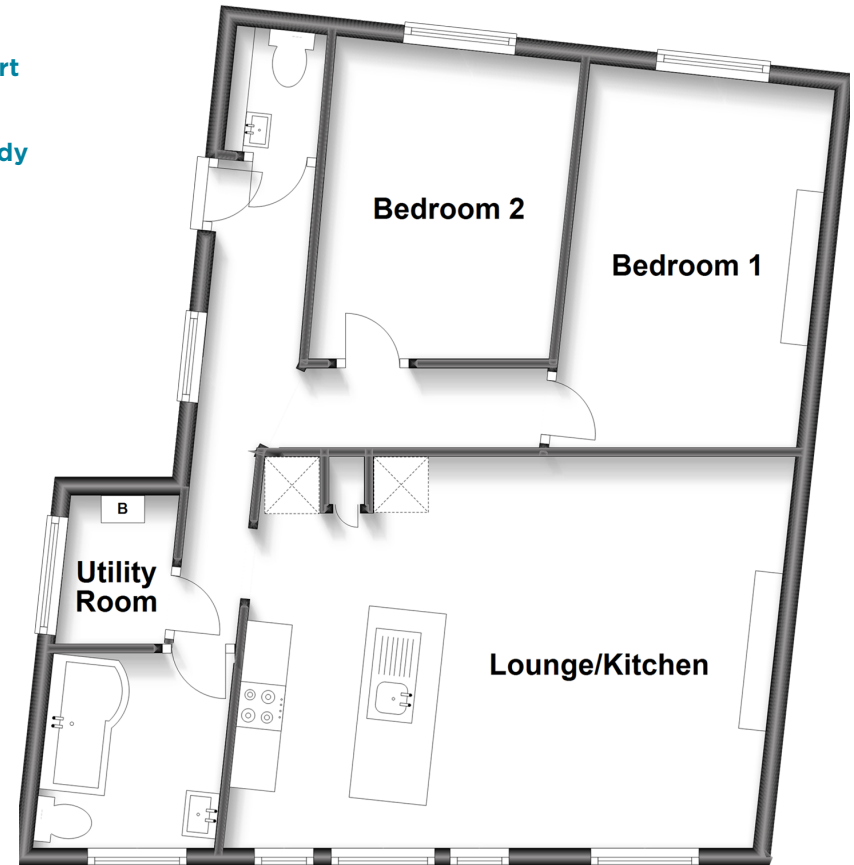
Bathroom: 9'9 x 6'6 (2.97m x 1.98m)

Utility Room: 5'6 x 3'0 (1.68m x 0.92m)

Cloakroom: 6'5 x 2'9 (1.96m x 0.84m)

### First Floor

Approx. 63.1 sq. metres (679.0 sq. feet)



**Call Folkestone - 01303 256505 ■ [wardsfolkent.co.uk](http://wardsfolkent.co.uk)**

- Legal advice should be taken to verify fixtures/fittings, planning, alterations and/or lease details
- Appliances & services are untested, dimensions are approximate and floor plans are not to scale



12636937/20221117/DW/CW