



**Price**

**£240,000**

**Leasehold**

2x  1x  1x 

**Bouverie Road West,  
Folkestone, Kent, CT20**

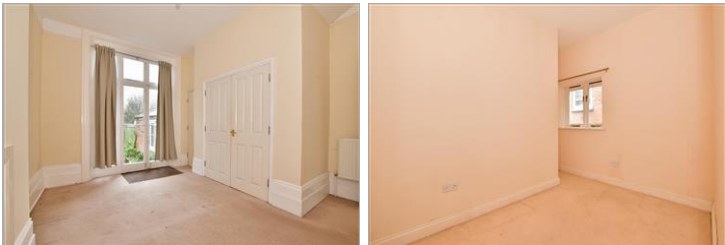
**OVER 60?**

Secure this property  
for up to **59% less!**



**Video Tour available**

*Wards*  
Helping you move forwards



## Main features

- **Stunning ground floor apartment with high ceilings**
- **Original features throughout, including with open fire and beautiful sash windows**
- **Walking distance to town**
- **Perfect first time buy, retirement home or investment opportunity**
- **No onward chain**

## Accommodation

### GROUND FLOOR

Entrance Hallway

Lounge/Diner : 16'2 x 15'10 (4.93m x 4.83m)

Kitchen : 8'9 x 8'2 (2.67m x 2.49m)

Bedroom 1 : 13'11 x 10'0 (4.24m x 3.05m)

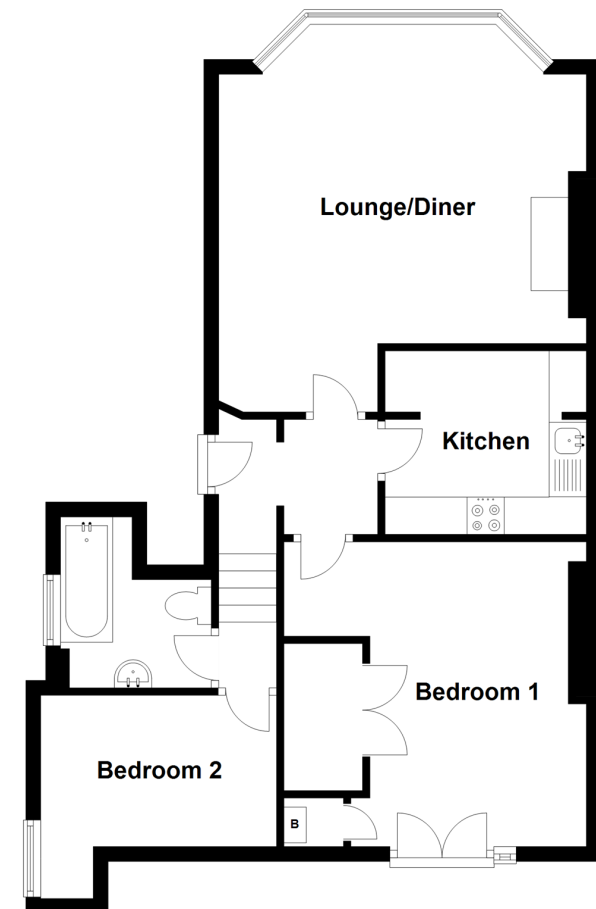
Bedroom 2 : 10'6 x 9'9 (3.20m x 2.97m)

Bathroom

### OUTSIDE

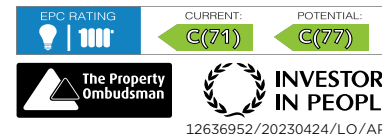
Garden to Rear

**Ground Floor**  
Approx. 62.0 sq. metres (666.9 sq. feet)



**Call Folkestone - 01303 256505 ■ [wardsofkent.co.uk](http://wardsofkent.co.uk)**

- Legal advice should be taken to verify fixtures/fittings, planning, alterations and/or lease details
- Appliances & services are untested, dimensions are approximate and floor plans are not to scale
- Through a Homewise Home For Life Plan people aged 60+ can secure this property for up to 59% less, by purchasing a Lifetime Lease.



12636952/20230424/LO/AP1