



**Price**  
**£395,000**

**Freehold**

4x  2x  1x 

**The Street, Hawkinge,  
Folkestone, Kent, CT18**



Video Tour available

*Wards*  
Helping you move forwards





## Main features

- An incredibly spacious, versatile family house
- Highly sought after semi-rural location
- Easy access to the M20 and Canterbury
- Large corner plot with ample garden space to the rear
- Off road parking and garage

## Accommodation

### GROUND FLOOR

**Kitchen/Diner** : 24'4 x 11'1 (7.42m x 3.38m)

#### Inner Hallway

**Shower Room** : 8'3 x 5'1 (2.52m x 1.55m)

**Utility Room** : 8'4 x 8'2 (2.54m x 2.49m)

**Lounge** : 24'4 x 12'0 (7.42m x 3.66m)

### FIRST FLOOR

#### Landing

**Bedroom 4** : 10'6 x 6'1 (3.20m x 1.86m)

**Bedroom 3** : 9'8 x 9'1 (2.95m x 2.77m)

**Bedroom 2** : 12'3 x 10'3 (3.74m x 3.13m)

**Bedroom 1** : 20'0 x 11'7 (6.10m x 3.53m)

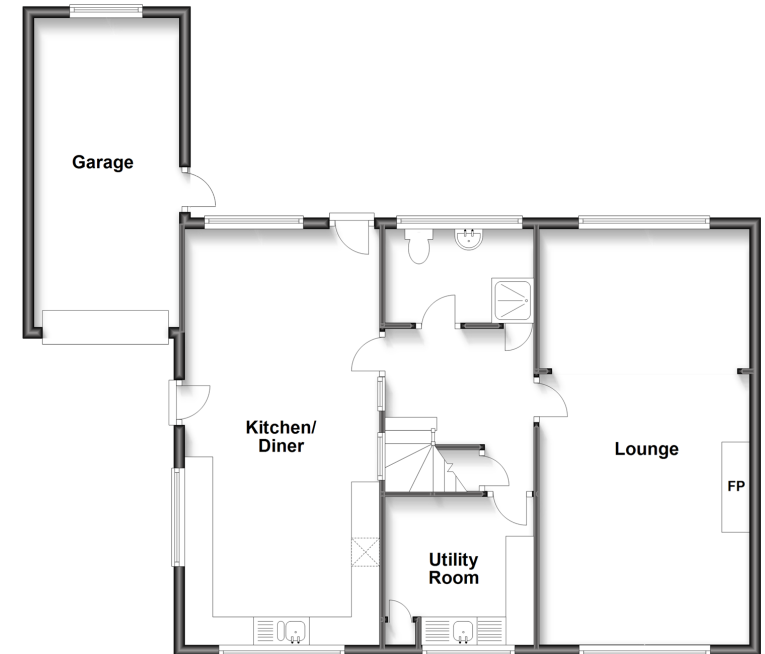
**Bathroom** : 8'2 x 4'8 (2.49m x 1.42m)

### OUTSIDE

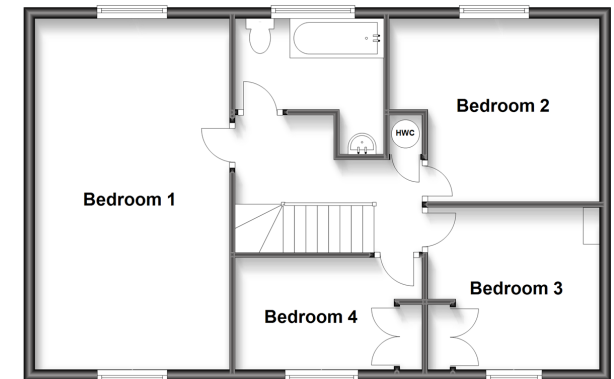
**Garden to Front & Rear**

**Garage & Off Road Parking**

**Ground Floor**  
Approx. 89.1 sq. metres (959.2 sq. feet)



**First Floor**  
Approx. 64.1 sq. metres (690.0 sq. feet)



**Call Folkestone - 01303 256505 ■ [wardsfolkent.co.uk](http://wardsfolkent.co.uk)**

- Legal advice should be taken to verify fixtures/fittings, planning, alterations and/or lease details
- Appliances & services are untested, dimensions are approximate and floor plans are not to scale



12636978/20220907/DW/DW