



OVER 60?

You could get up to
59% off the price!*

Price

£180,000

Leasehold

2x  1x  1x 

**East Cliff Gardens,
Folkestone, Kent, CT19**

Wards
Helping you move forwards



Main features

- Ground floor apartment
- Ideal first time buy or investment opportunity
- Stunning location, close to the harbour and town
- Ready to move straight into
- Fantastic high ceilings

Accommodation

GROUND FLOOR

Hallway

Lounge: 19'6 x 12'0 (5.95m x 3.66m)

Kitchen: 9'9 x 7'8 (2.97m x 2.34m)

Bedroom 1: 10'5 x 8'6 (3.18m x 2.59m)

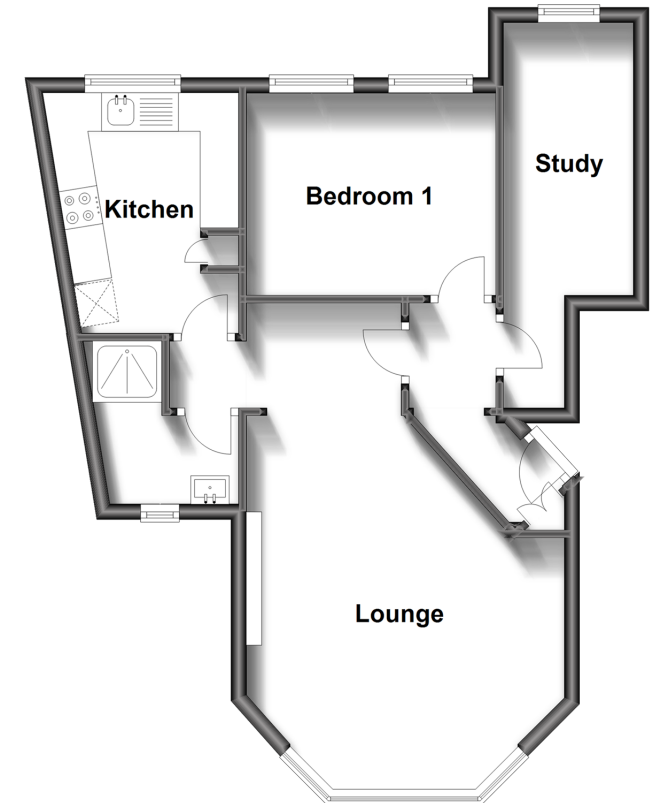
Study

OUTSIDE

Allocated Parking

Ground Floor

Approx. 49.9 sq. metres (536.8 sq. feet)



Call Folkestone - 01303 256505 ■ wardsofkennt.co.uk

- Legal advice should be taken to verify fixtures/fittings, planning, alterations and/or lease details
- Appliances & services are untested, dimensions are approximate and floor plans are not to scale
- Our Homewise partnership offer a 'Home for Life' plan to buyers over 60, granting a lifetime lease for your protection and reducing the purchase price by up to 59%



12636982/20220816/DW/CW