



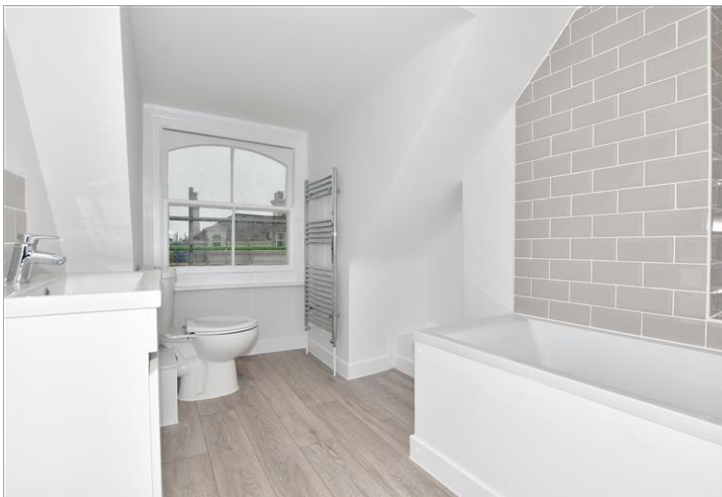
Price
£180,000

Leasehold

2x  1x  1x 

**Trinity Court, Trinity
Gardens, Folkestone,
Kent, CT20**

Wards
Helping you move forwards



Main features

- Newly renovated to a high standard
- Small study/dressing room
- A short walk to the sea
- A sought after location in the West End of Folkestone
- Communal gardens

Accommodation

TOP FLOOR

Entrance Hall

Lounge : 13'7 x 12'1 (4.14m x 3.69m)

Kitchen: 10'1 x 7'0 (3.08m x 2.14m)

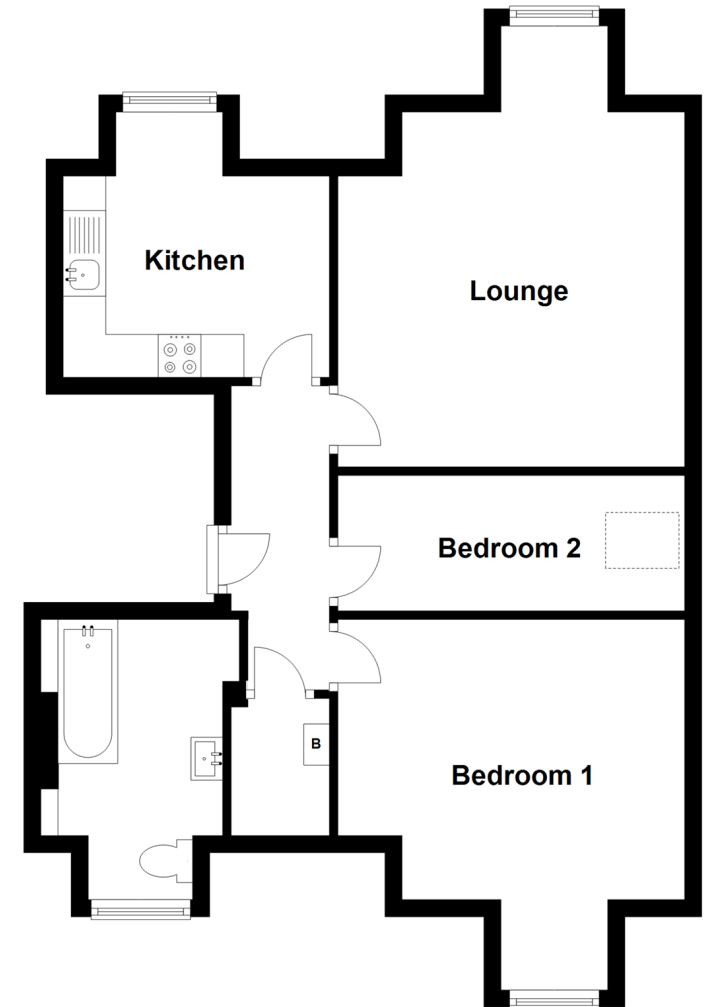
Bedroom 1: 13'2 x 10'9 (4.02m x 3.28m)

Bedroom 2: 13'3 x 5'10 (4.04m x 1.78m)

Bathroom

Top Floor

Approx. 60.5 sq. metres (650.8 sq. feet)



Call Folkestone - 01303 256505 ■ wardsfolkent.co.uk

- Legal advice should be taken to verify fixtures/fittings, planning, alterations and/or lease details
- Appliances & services are untested, dimensions are approximate and floor plans are not to scale



12636985/20220404/LE/CW