



Price
£350,000

Freehold

3x  1x  1x 

**Downs Road,
Folkestone, Kent, CT19**

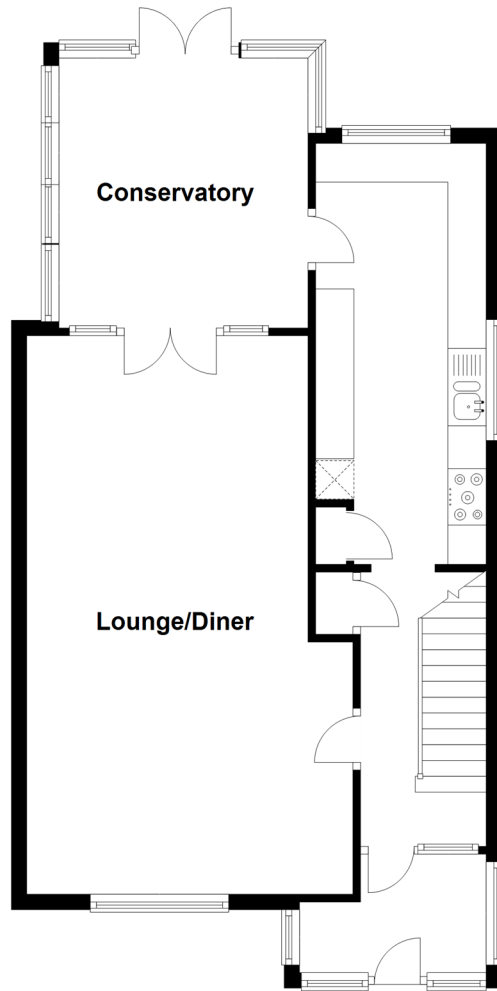


Video Tour available

Wards
Helping you move forwards

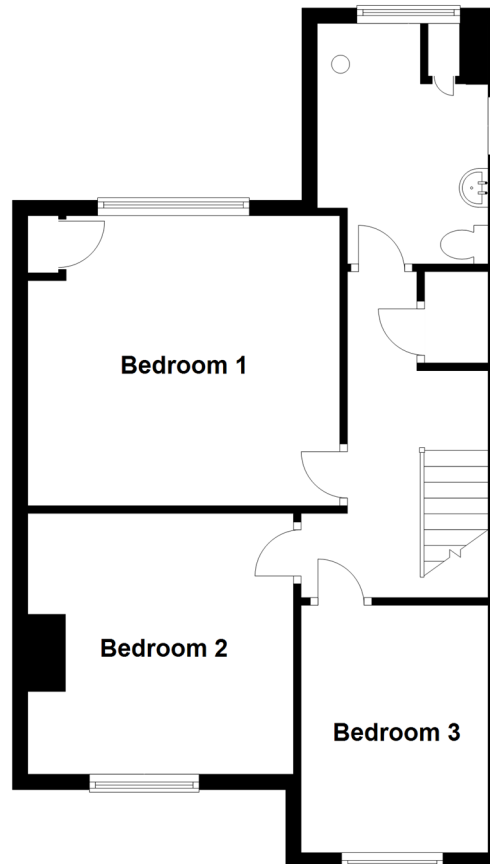
Ground Floor

Approx. 63.3 sq. metres (681.5 sq. feet)



First Floor

Approx. 51.4 sq. metres (553.0 sq. feet)



Accommodation

GROUND FLOOR

Porch : 9'0 x 5'0 (2.75m x 1.53m)

Entrance Hallway

Lounge/Diner : 23'6 x 11'9 (7.17m x 3.58m)

Conservatory : 11'7 x 10'1 (3.53m x 3.08m)

Kitchen : 17'9 x 7'3 (5.41m x 2.21m)

FIRST FLOOR

Landing

Wet Room : 10'5 x 6'9 (3.18m x 2.06m)

Bedroom 1 : 13'3 x 12'3 (4.04m x 3.74m)

Bedroom 2 : 11'4 x 11'0 (3.46m x 3.36m)

Bedroom 3 : 10'4 x 7'9 (3.15m x 2.36m)

OUTSIDE

Garden to Rear

Off Road Parking



Main features

- Perfect home for a growing family
- Vast living accommodation
- Off road parking to the front
- Large sun trap rear garden, a great place to entertain friends and family in the summer months
- Superb location in close proximity to train stations and local amenities



Nearest Schools

Primary Schools: Mundella Primary 0.0 miles, Park Farm Primary 0.1 miles, Castle Hill Community Primary 0.2 miles
Secondary Schools: Highview School 0.1 miles, Oakwood School 0.5 miles, The Harvey Grammar School 0.9 miles



Transport Information

Train Stations: Folkestone Central 0.6 miles, Folkestone West High Speed Link 1.1 miles, Sandling 4.9 miles



Address

Downs Road, Folkestone, Kent, CT19



Directions

For directions to this property please contact us.



Wards
Helping you move forwards

Call Folkestone Branch 01303 256505 ■ wardsofkent.co.uk



■ Legal advice should be taken to verify fixtures/fittings, planning, alterations and/or lease details ■ Appliances & services are untested, dimensions are approximate and floor plans are not to scale



12636988/20220606/PH1/DW