



**OVER 60?**

Secure this property  
for up to **59% less!**

**Price**

**£300,000**

**Leasehold**

3x  1x  1x 

**Trinity Court, Trinity  
Gardens, Folkestone,  
Kent, CT20**

*Wards*  
Helping you move forwards



## Main features

- Lower ground floor apartment with spacious rooms throughout
- Newly renovated
- Communal garden area
- Sought after location in the West End of Folkestone
- Short walk to The Leas and town centre

## Accommodation

### LOWER GROUND FLOOR

#### Entrance Hallway

Lounge: 17'1 x 11'10 (5.21m x 3.61m)

Living Room : 19'11 x 15'5 (6.07m x 4.70m)

Kitchen: 15'5 x 8'7 (4.70m x 2.62m)

Bedroom 1: 16'1 x 13'2 (4.91m x 4.02m)

Bedroom 2: 12'10 x 6'10 (3.91m x 2.08m)

Bedroom 3 : 10'8 x 9'11 (3.25m x 3.02m)

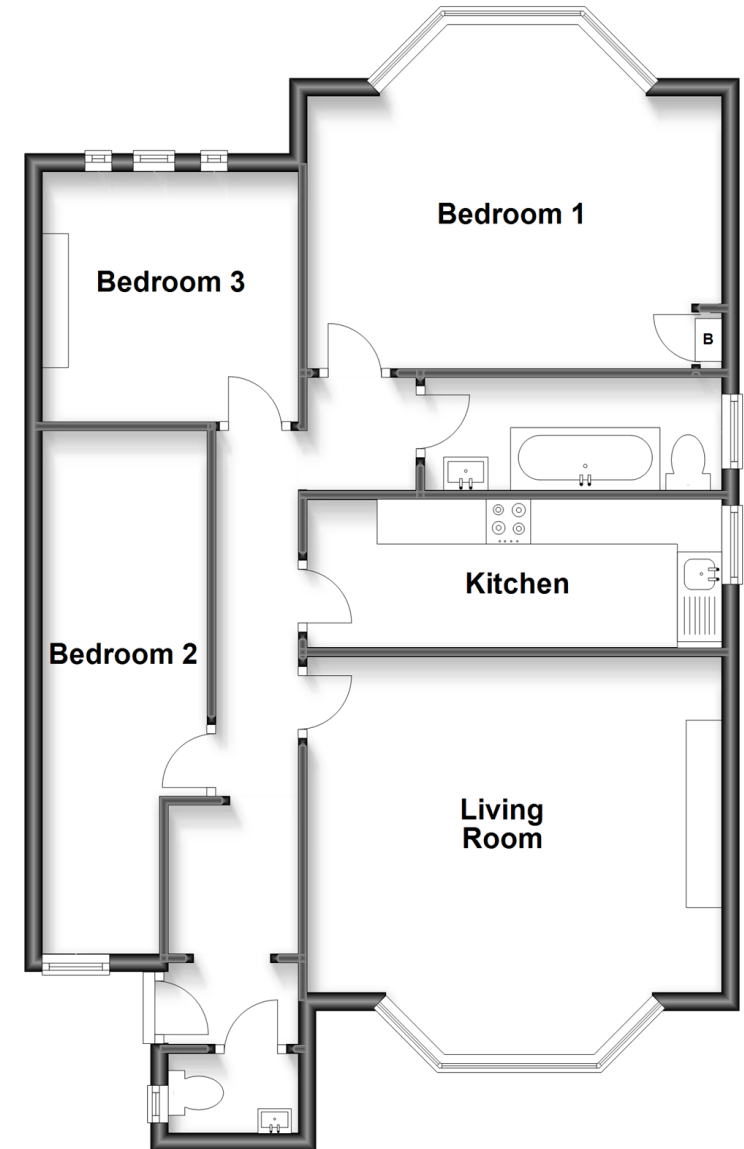
Bathroom : 10'2 x 8'6 (3.10m x 2.59m)

### OUTSIDE

Communal Garden

## Lower Ground Floor

Approx. 76.8 sq. metres (826.8 sq. feet)



**Call Folkestone - 01303 256505 ■ [wardsofkent.co.uk](http://wardsofkent.co.uk)**

- Legal advice should be taken to verify fixtures/fittings, planning, alterations and/or lease details
- Appliances & services are untested, dimensions are approximate and floor plans are not to scale
- Through a Homewise Home For Life Plan people aged 60+ can secure this property for up to 59% less, by purchasing a Lifetime Lease.



12636995/20230517/CW/CW