



**OVER 60?**

Secure this property  
for up to **59% less!**

**Price**  
**£265,000**

**Leasehold**

2x  1x  1x 

**Trinity Court, Trinity  
Gardens, Folkestone,  
Kent, CT20**

*Wards*  
Helping you move forwards



## Main features

- Upper ground floor apartment with spacious rooms throughout
- Newly renovated
- Communal garden area
- Sought after location in the West End of Folkestone
- Short walk to The Leas and town centre

## Accommodation

### GROUND FLOOR

#### Entrance Hallway

Lounge/Diner : 16'11 x 16'4 (5.16m x 4.98m)

Kitchen/Breakfast : 11'9 x 9'10 (3.58m x 3.00m)

Bedroom 1 : 15'3 x 13'6 (4.65m x 4.12m)

#### En-Suite Shower Room

Bedroom 2 : 12'3 x 11'1 (3.74m x 3.38m)

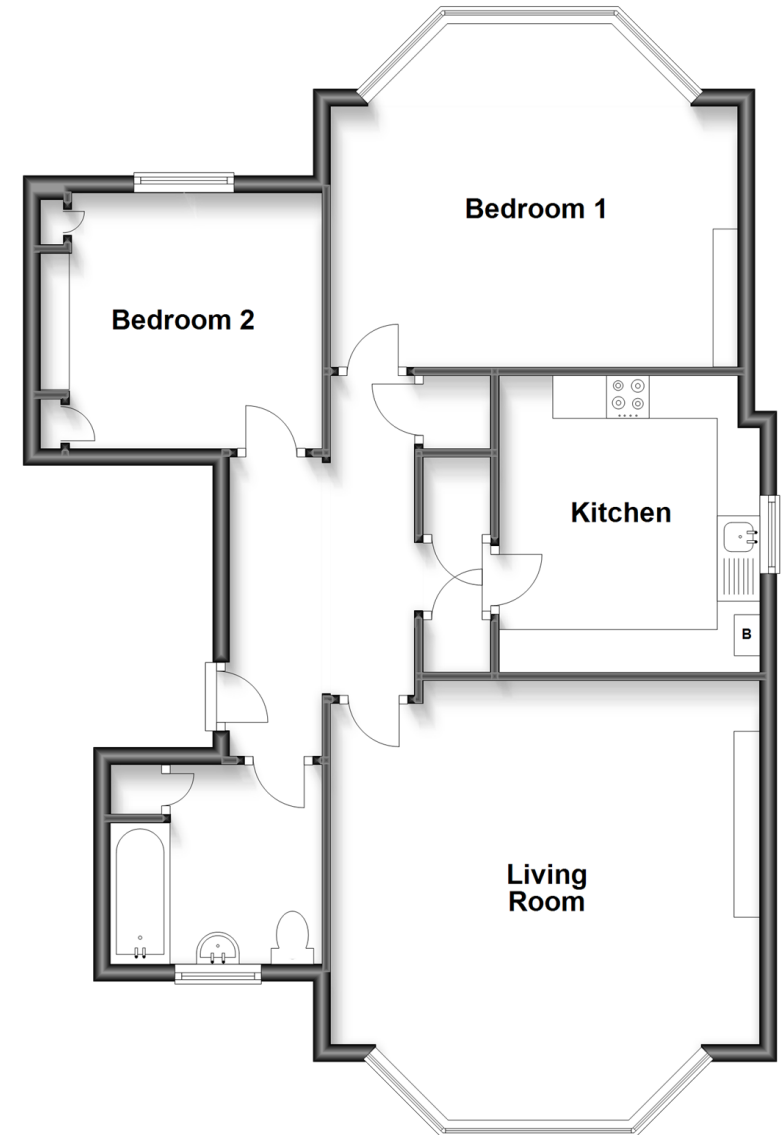
Bathroom : 8'7 x 7'7 (2.62m x 2.31m)

### OUTSIDE

Communal Garden

## Ground Floor

Approx. 76.9 sq. metres (827.6 sq. feet)



**Call Folkestone - 01303 256505 ■ [wardsofkennt.co.uk](http://wardsofkennt.co.uk)**

- Legal advice should be taken to verify fixtures/fittings, planning, alterations and/or lease details
- Appliances & services are untested, dimensions are approximate and floor plans are not to scale
- Through a Homewise Home For Life Plan people aged 60+ can secure this property for up to 59% less, by purchasing a Lifetime Lease.



12636997/20230517/CW/CW