



Price
£270,000

Leasehold

3x  1x  1x 

**Trinity Court, Trinity
Gardens, Folkestone,
Kent, CT20**

OVER 60?

Secure this property
for up to **59% less!**

Wards
Helping you move forwards



Main features

- Communal garden,
- High ceilings,
- A short walk to the sea,
- Sought after location in the West End of Folkestone,
- Newly renovated

Accommodation

SECOND FLOOR

Entrance Hall

Lounge : 16'0 x 11'3 (4.88m x 3.43m)

Kitchen : 9'3 x 8'1 (2.82m x 2.47m)

Bedroom 1: 16'4 x 11'2 (4.98m x 3.41m)

Bedroom 2: 10'8 x 8'1 (3.25m x 2.47m)

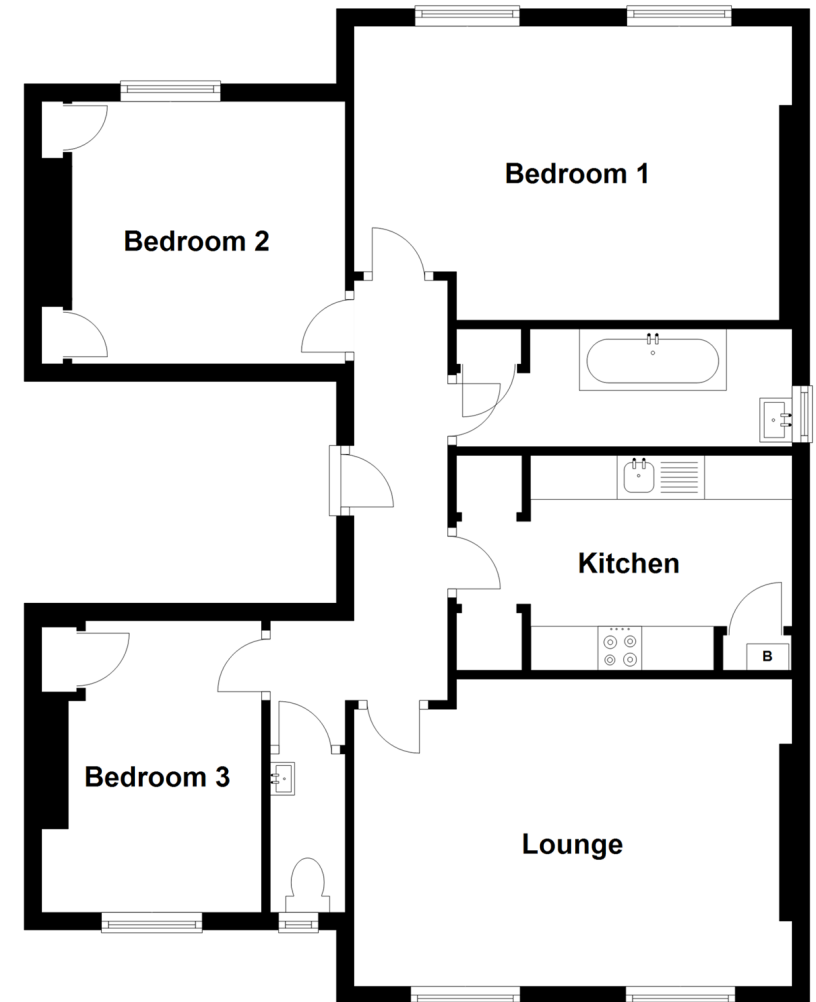
Bedroom 3: 10'7 x 10'2 (3.23m x 3.10m)

Bathroom

Cloakroom

Second Floor

Approx. 77.3 sq. metres (832.2 sq. feet)



Call Folkestone - 01303 256505 ■ wardsofkennt.co.uk

- Legal advice should be taken to verify fixtures/fittings, planning, alterations and/or lease details
- Appliances & services are untested, dimensions are approximate and floor plans are not to scale
- Through a Homewise Home For Life Plan people aged 60+ can secure this property for up to 59% less, by purchasing a Lifetime Lease.



12637004/20230518/LO/CW