



**Price**  
**£500,000**

**Freehold**

4x  1x  1x 

**Trinity Drive,  
Folkestone, Kent, CT19**

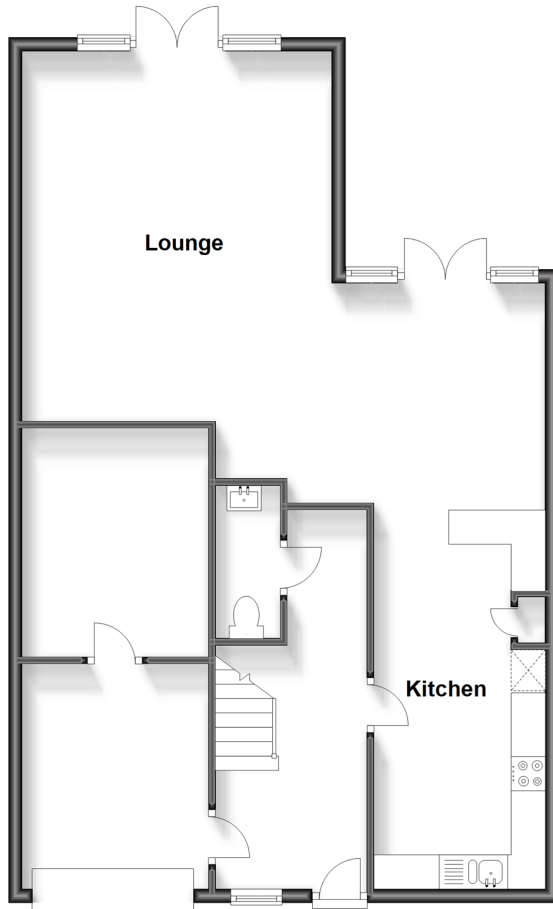
**OVER 60?**

Secure this property  
for up to **59% less!**

*Wards*  
Helping you move forwards

### Ground Floor

Approx. 83.1 sq. metres (894.7 sq. feet)



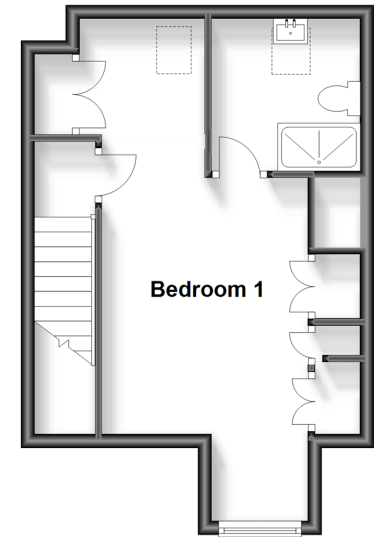
### First Floor

Approx. 64.6 sq. metres (695.9 sq. feet)



### Second Floor

Approx. 26.1 sq. metres (280.4 sq. feet)



## Accommodation

### GROUND FLOOR

Lounge: 24'1 x 17'8 (7.35m x 5.39m)  
Kitchen: 16'5 x 8'3 (5.01m x 2.52m)  
Separate Toilet  
Garage

### FIRST FLOOR

Landing  
Bedroom 2: 15'5 x 9'2 (4.70m x 2.80m)  
En-suite  
Bedroom 3: 13'1 x 8'3 (3.99m x 2.52m)  
Bedroom 4: 13'1 x 7'8 (3.99m x 2.34m)  
Bathroom

### SECOND FLOOR

Landing  
Bedroom 1: 21'1 x 10'7 (6.43m x 3.23m)  
En-suite

### OUTSIDE

Rear Garden  
Off Road Parking





## Main features

- Garage and off road parking for three cars
- Spacious accommodation throughout
- Two en-suites
- Stunning modern development close to town and Central Station
- Low maintenance rear garden



### Nearest Schools

Primary Schools: Stella Maris Catholic Primary 0.4 miles, Park Farm Primary 0.4 miles, Mundella Primary 0.6 miles

Secondary Schools and Further Education: The Harvey Grammar School 0.6 miles, South Kent College 0.7 miles,



### Transport Information

Train Stations: Folkestone Central 0.6 miles, Folkestone West High Speed Link 0.8 miles, Sandling 4.3 miles



### Address

Trinity Drive, Folkestone, Kent, CT19



### Directions

For directions to this property please contact us.





Call Folkestone Branch 01303 256505 ■ [wardsofkent.co.uk](https://wardsofkent.co.uk)



- Legal advice should be taken to verify fixtures/fittings, planning, alterations and/or lease details
- Appliances & services are untested, dimensions are approximate and floor plans are not to scale
- Through a Homewise Home For Life Plan people aged 60+ can secure this property for up to 59% less, by purchasing a Lifetime Lease.



12637086/20240311/CW/CW