



OVER 60?

You could get up to
59% off the price!*

Price

£190,000

Leasehold

2x  1x  1x 

**Shorncliffe Road,
Folkestone, Kent, CT20**

Wards
Helping you move forwards



Main features

- Second floor flat, in need of updating
- Highly sought after location, close to the train station
- Perfect for investors or if you're looking to put your own stamp on
- Spacious rooms
- Being sold with no onward chain

Accommodation

SECOND FLOOR

Hallway

Lounge: 18'8 x 17'3 (5.69m x 5.26m)

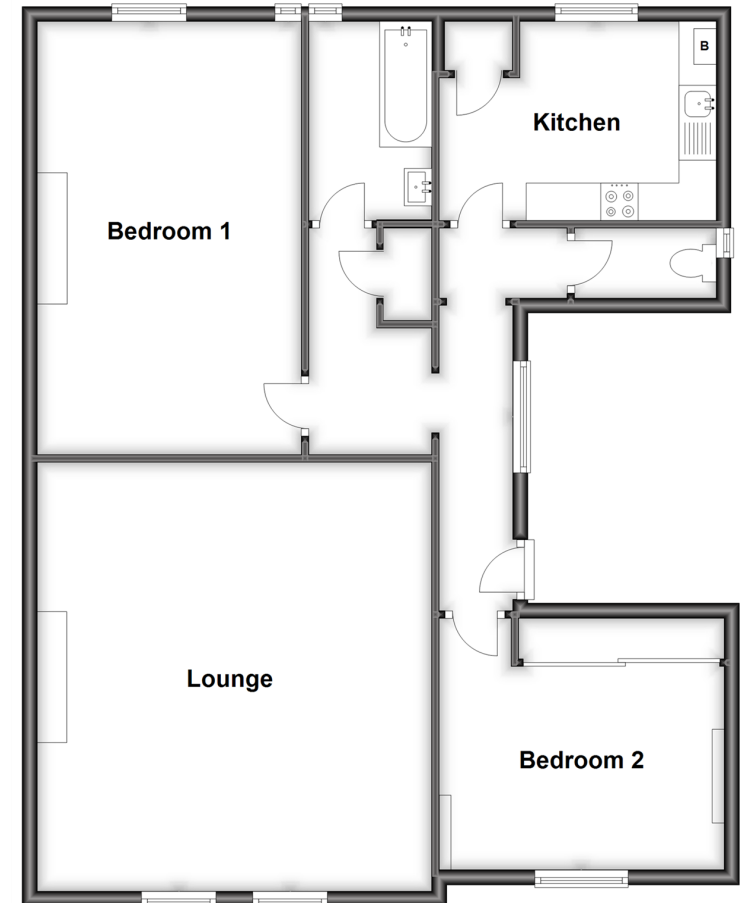
Kitchen : 11'5 x 9'8 (3.48m x 2.95m)

Bedroom 1: 19'0 x 11'6 (5.80m x 3.51m)

Bedroom 2: 12'1 x 11'0 (3.69m x 3.36m)

Second Floor

Approx. 93.4 sq. metres (1004.9 sq. feet)



Call Folkestone - 01303 256505 ■ wardsofkennt.co.uk

- Legal advice should be taken to verify fixtures/fittings, planning, alterations and/or lease details
- Appliances & services are untested, dimensions are approximate and floor plans are not to scale
- Our Homewise partnership offer a 'Home for Life' plan to buyers over 60, granting a lifetime lease for your protection and reducing the purchase price by up to 59%



12637088/20220813/LS/CW