



OVER 60?

You could get up to
59% off the price!*

Price

£200,000

Leasehold

2x  1x  1x 

**Rossendale Court, Dover
Road, Folkestone, Kent,
CT20**

Wards
Helping you move forwards



Main features

- Large, beautiful garden with a hot tub
- Located to the ground floor
- Great condition
- Perfect for first time buyer or to add to your investment portfolio
- Close to town, local amenities, and the Harbour

Accommodation

GROUND FLOOR

Entrance Hall

Lounge: 12'7 x 12'4 (3.84m x 3.76m)

Kitchen: 10'4 x 6'8 (3.15m x 2.03m)

Bedroom 1: 10'4 x 7'8 (3.15m x 2.34m)

Bedroom 2: 13'4 x 11'1 (4.07m x 3.38m)

Bathroom

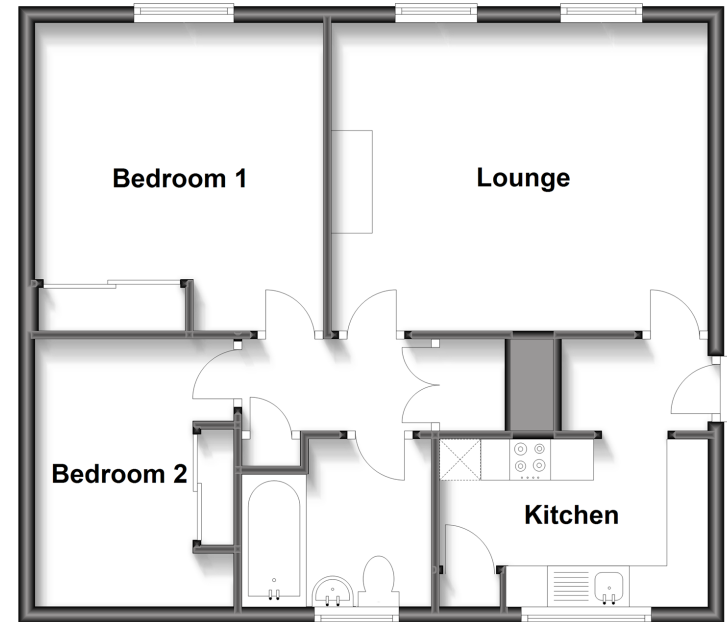
OUTSIDE

Rear Garden

Off-Road Parking

Ground Floor

Approx. 58.4 sq. metres (628.9 sq. feet)



Call Folkestone - 01303 256505 ■ wardsfolkent.co.uk

- Legal advice should be taken to verify fixtures/fittings, planning, alterations and/or lease details
- Our Homewise partnership offer a 'Home for Life' plan to buyers over 60, granting a lifetime lease for your protection and reducing the purchase price by up to 59%

■ Appliances & services are untested, dimensions are approximate and floor plans are not to scale



12637102/20220813/LS/CW