



**Price**  
**£350,000**

**Freehold**

3x  1x  1x 

**Walton Manor Close,  
Folkestone, Kent, CT19**

**OVER 60?**

Secure this property  
for up to **59% less!**

*Wards*  
Helping you move forwards





## Main features

- Quaint and quiet cul-de-sac close to good transport links and easy access to M20
- Beautiful farmhouse aesthetic
- Garage and two allocated parking spaces
- Master bedroom with dressing area
- Highly popular location

## Accommodation

### GROUND FLOOR

Hallway

Lounge/Diner: 24'0 x 11'7 (7.32m x 3.53m)

Kitchen: 9'3 x 9'1 (2.82m x 2.77m)

Bathroom

### FIRST FLOOR

Landing

Bedroom 1: 11'4 x 6'8 (3.46m x 2.03m)

Bedroom 2: 9'7 x 9'7 (2.92m x 2.92m)

Bedroom 3: 12'7 x 10'8 (3.84m x 3.25m)

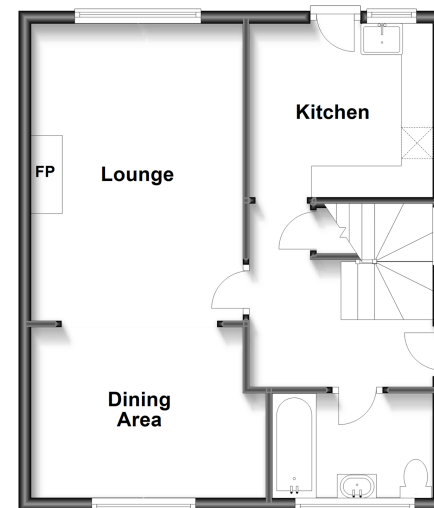
Dressing Area

### OUTSIDE

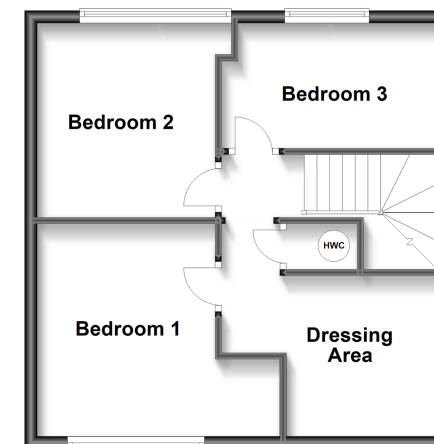
**Call Folkestone - 01303 256505 ■ [wardsofkent.co.uk](http://wardsofkent.co.uk)**

- If buying to let, the energy rating will need to be improved to at least 'E' rating before you can let the property
- Legal advice should be taken to verify fixtures/fittings, planning, alterations and/or lease details
- Appliances & services are untested, dimensions are approximate and floor plans are not to scale
- Through a Homewise Home For Life Plan people aged 60+ can secure this property for up to 59% less, by purchasing a Lifetime Lease.

**Ground Floor**  
Approx. 48.6 sq. metres (523.4 sq. feet)



**First Floor**  
Approx. 42.4 sq. metres (456.1 sq. feet)



12637116/20230513/CC/CW