



Price
£214,000

Freehold

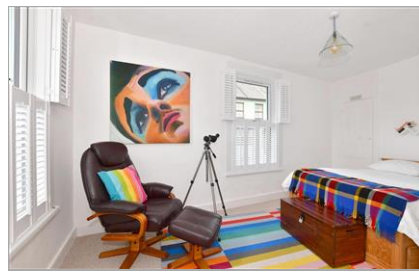
2x  1x  1x 

**Mount Pleasant Road,
Folkestone, Kent, CT20**

OVER 60?

Secure this property
for up to **59% less!**

Wards
Helping you move forwards



Main features

- Close proximity to Folkestone's vibrant Harbour Arm, theatre, art district, skate board park and beach
- The perfect property for any and all types of buyers
- Bright, spacious and open plan - just stunning internally and ready to move into
- Beautifully kept home with courtyard garden & side entrance
- With fresh modern decor and dual aspects windows

Accommodation

GROUND FLOOR

Lounge Area: 15'2 x 9'2 (4.63m x 2.80m)
Dining Area: 11'2 x 10'4 (3.41m x 3.15m)
Kitchen Area: 12'10 x 6'1 (3.91m x 1.86m)

FIRST FLOOR

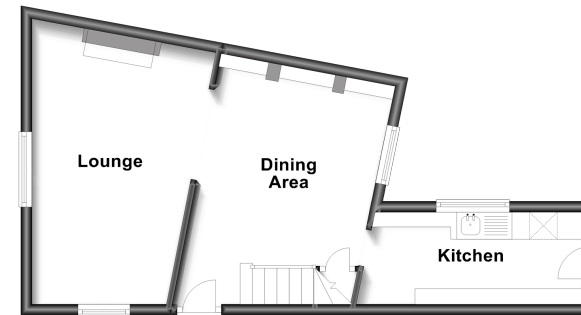
Landing
Bedroom 1: 15'6 x 9'6 (4.73m x 2.90m)
Bedroom 2: 8'4 x 7'7 (2.54m x 2.31m)
Bathroom

OUTSIDE

Rear Courtyard Garden

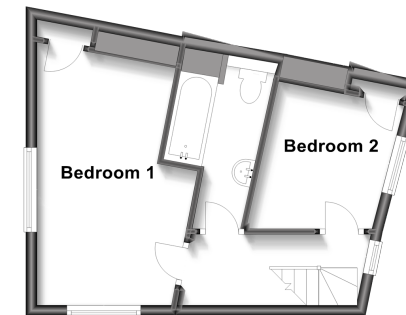
Ground Floor

Approx. 35.9 sq. metres (386.1 sq. feet)



First Floor

Approx. 29.3 sq. metres (315.1 sq. feet)



Call Folkestone - 01303 256505 ■ wardsfolkent.co.uk

■ Legal advice should be taken to verify fixtures/fittings, planning, alterations and/or lease details
■ Through a Homewise Home For Life Plan people aged 60+ can secure this property for up to 59% less, by purchasing a Lifetime Lease.

■ Appliances & services are untested, dimensions are approximate and floor plans are not to scale



12637135/20230114/TE/AP1