



OVER 60?

You could get up to
59% off the price!*

Price
£235,000

Freehold

2x  1x  1x 

**Cromwell Park Place,
Folkestone, Kent, CT20**

Wards
Helping you move forwards



Main features

- Sought after family location due to its close proximity to schools and parks
- On main bus route to Canterbury and Dover
- Modern living accommodation making it an ideal first buy
- The locality makes this property an ideal investment
- Close proximity to Sandgate's award winning beaches

Accommodation

GROUND FLOOR

Hallway

Living Room: 14'0 x 12'5 (4.27m x 3.79m)

Kitchen: 12'2 x 6'8 (3.71m x 2.03m)

FIRST FLOOR

Landing

Bedroom 1: 10'6 x 10'2 (3.20m x 3.10m)

Bedroom 2: 9'3 x 6'1 (2.82m x 1.86m)

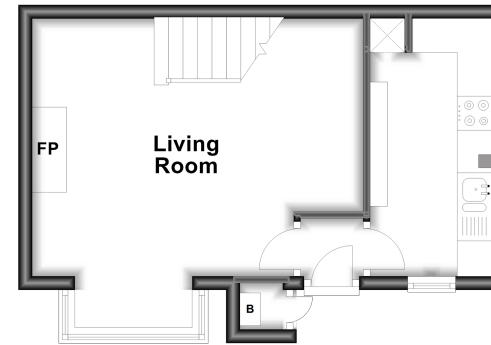
Bathroom

OUTSIDE

Front Garden

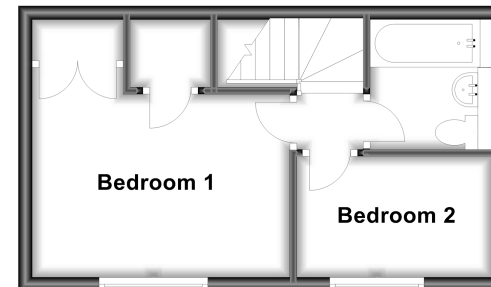
Ground Floor

Approx. 26.4 sq. metres (283.9 sq. feet)



First Floor

Approx. 25.3 sq. metres (271.8 sq. feet)



Call Folkestone - 01303 256505 ■ wardsfolkent.co.uk

- Legal advice should be taken to verify fixtures/fittings, planning, alterations and/or lease details
- Our Homewise partnership offer a 'Home for Life' plan to buyers over 60, granting a lifetime lease for your protection and reducing the purchase price by up to 59%

■ Appliances & services are untested, dimensions are approximate and floor plans are not to scale



12637139/20220809/AP1/CW