



Guide Price
£325,000

Leasehold

2x  2x  1x 

**James Court, Dixwell
Road, Folkestone, Kent,
CT20**

OVER 60?

Secure this property
for up to **59% less!**

Wards
Helping you move forwards



Main features

- Highly prestigious location
- Impeccably maintained communal grounds
- Lease extension will be applied
- Well presented and ready to move straight into
- Close to town and Folkestone West Station

Accommodation

GROUND FLOOR

LOUNGE: 17'9 x 11'11 (5.41m x 3.63m)

BEDROOM 2: 14'1 x 11'6 (4.30m x 3.51m)

KITCHEN: 13'1 x 10'1 (3.99m x 3.08m)

SHOWER ROOM: 8'2 x 7'3 (2.49m x 2.21m)

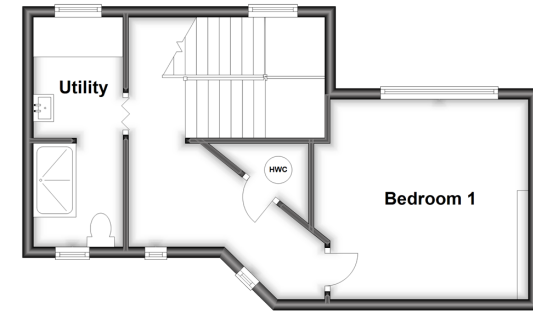
FIRST FLOOR

BEDROOM 1: 11'6 x 11'1 (3.51m x 3.38m)

UTILITY/BATHROOM: 14'1 x 5'3 (4.30m x 1.60m)

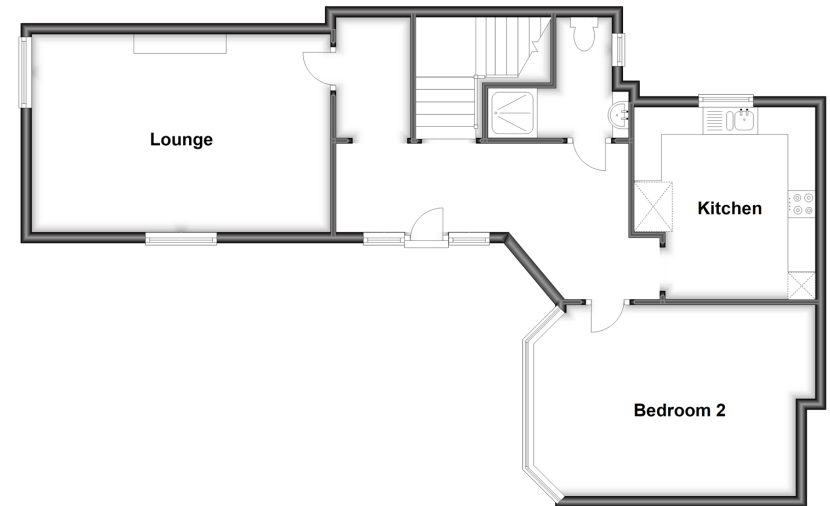
First Floor

Approx. 37.3 sq. metres (401.7 sq. feet)



Split Level Ground Floor

Approx. 71.4 sq. metres (768.6 sq. feet)



Call Folkestone - 01303 256505 ■ wardsofkennt.co.uk

- Legal advice should be taken to verify fixtures/fittings, planning, alterations and/or lease details
- Appliances & services are untested, dimensions are approximate and floor plans are not to scale
- Through a Homewise Home For Life Plan people aged 60+ can secure this property for up to 59% less, by purchasing a Lifetime Lease.



12637303/20230126/VB/CW