



OVER 60?

Secure this property
for up to **59% less!**

Price

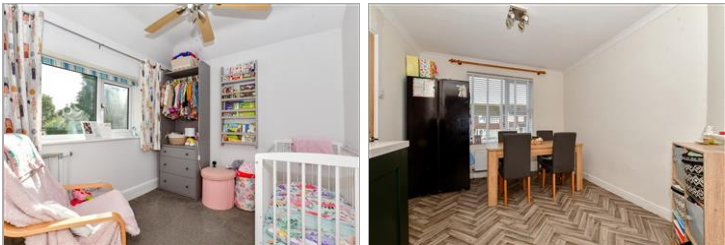
£280,000

Freehold

3x  1x  2x 

**West View, Canterbury
Road, Folkestone, Kent,
CT19**

Wards
Helping you move forwards



Main features

- **Spacious versatile accommodation, separate lounge**
- **Generous sized open plan kitchen/diner**
- **Recently modernised kitchen**
- **Conveniently located within easy access to M20 and the train station, perfect for commuters**
- **Large rear garden**

Accommodation

GROUND FLOOR

Entrance Hall

Lounge: 17'4 x 10'8 (5.29m x 3.25m)

Kitchen: 9'9 x 8'9 (2.97m x 2.67m)

Dining Area: 12'0 x 9'9 (3.66m x 2.97m)

FIRST FLOOR

Landing

Bedroom 1: 15'3 x 10'0 (4.65m x 3.05m)

Bedroom 2: 11'2 x 9'3 (3.41m x 2.82m)

Bedroom 3: 8'2 x 7'9 (2.49m x 2.36m)

Bathroom

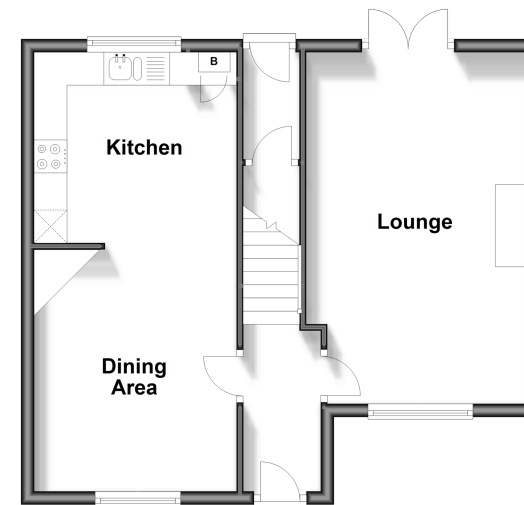
OUTSIDE

Front Garden

Rear Garden

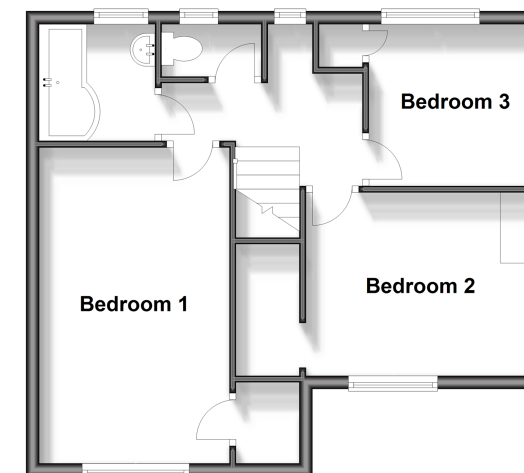
Ground Floor

Approx. 45.8 sq. metres (493.0 sq. feet)



First Floor

Approx. 45.3 sq. metres (487.3 sq. feet)



Call Folkestone - 01303 256505 ■ wardsofkent.co.uk

- The seller is a person connected with Wards as defined in the Estate Agents Act 1979
- Legal advice should be taken to verify fixtures/fittings, planning, alterations and/or lease details
- Appliances & services are untested, dimensions are approximate and floor plans are not to scale
- Through a Homewise Home For Life Plan people aged 60+ can secure this property for up to 59% less, by purchasing a Lifetime Lease.



12637310/20240426/CW/CC