



OVER 60?

Secure this property
for up to **59% less!**

Price

£390,000

Freehold

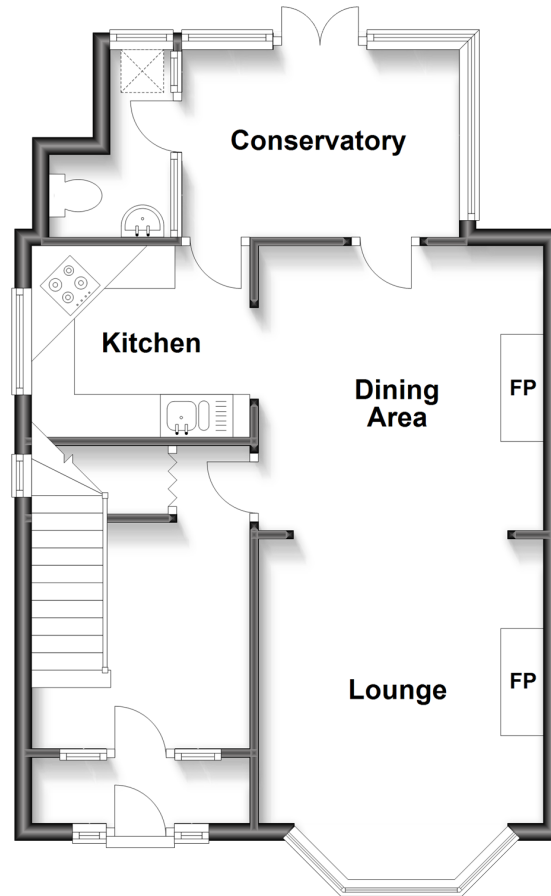
3x  1x  1x 

**Shorncliffe Road,
Folkestone, Kent, CT20**

Wards
Helping you move forwards

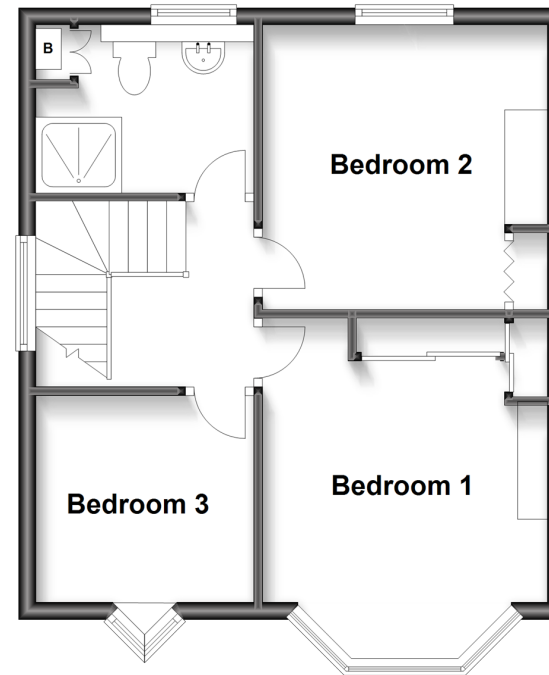
Ground Floor

Approx. 51.0 sq. metres (549.1 sq. feet)



First Floor

Approx. 41.0 sq. metres (441.5 sq. feet)



Accommodation

GROUND FLOOR

Porch
Hallway
Dining Room: 10'9 x 10'9 (3.28m x 3.28m)
Lounge: 10'9 x 10'9 (3.28m x 3.28m)
Kitchen: 8'4 x 7'3 (2.54m x 2.21m)
Conservatory: 11'8 x 7'9 (3.56m x 2.36m)
Toilet

Landing

Bedroom 1: 13'0 x 10'9 (3.97m x 3.28m)
Bedroom 2: 10'9 x 10'9 (3.28m x 3.28m)
Bedroom 3: 8'5 x 7'9 (2.57m x 2.36m)
Wet Room: 8'5 x 7'1 (2.57m x 2.16m)

OUTSIDE

Rear Garden
Cabin
Double Length Garage

FIRST FLOOR



Main features

- Tandem garage and powered summer house to the rear
- Off road parking
- Downstairs toilet and stair lift fitted for added convenience
- Spacious family home set only a short walk from Folkestone West train station
- Generous sun trap rear garden



Nearest Schools

Primary Schools: All Souls' C of E Primary 0.5 miles, Sandgate Primary 0.6 miles, Cheriton Primary 0.8 miles

Secondary Schools: The Harvey Grammar School 0.6 miles, The Folkestone School for Girls 0.9 miles, Highview



Transport Information

Train Stations: Folkestone West High Speed Link 0.4 miles, Folkestone Central 1.3 miles, Sandling 5.0 miles



Address

Shorncliffe Road, Folkestone, Kent, CT20



Directions

For directions to this property please contact us.



Wards
Helping you move forwards

Call Folkestone Branch 01303 256505 ■ wardsofkent.co.uk



- Legal advice should be taken to verify fixtures/fittings, planning, alterations and/or lease details
- Appliances & services are untested, dimensions are approximate and floor plans are not to scale
- Through a Homewise Home For Life Plan people aged 60+ can secure this property for up to 59% less, by purchasing a Lifetime Lease.



12637313/20221203/LS/DW